

Association Between Frequency of Major Amputations and the Occlusive Pattern of Peripheral Arterial Disease

Lao Gómez M¹, Cabrera Zamora JL^{2*}, Aldama Figueroa A³ and Luna Carménate A¹

¹First Degree Specialist in Angiology and Vascular Surgery, National Institute of Angiology and Vascular Surgery, Cuba

²Master in Atherosclerosis, National Institute of Angiology and Vascular Surgery, Cuba

³Doctor in Medical Sciences. 2nd Degree Specialist in Normal and Pathological Physiology, Cuba

***Corresponding author:** Jose Luis Cabrera Zamora, Master in Atherosclerosis, 2nd Degree Specialist in Angiology and Vascular Surgery, National Institute of Angiology and Vascular Surgery, Havana, Cuba

ARTICLE INFO

Received: 📅 May 01, 2024

Published: 📅 May 07, 2024

Citation: Lao Gómez M, Cabrera Zamora JL, Aldama Figueroa A and Luna Carménate A. Association Between Frequency of Major Amputations and the Occlusive Pattern of Peripheral Arterial Disease. Biomed J Sci & Tech Res 56(3)-2024. BJSTR. MS.ID.008862.

SUMMARY

Introduction: Peripheral Arterial Disease (PAD) is the leading cause of amputation worldwide. The location of the affected sector could have a certain predictive value regarding the evolution of these patients.

Objective: Estimate the association between the frequency of major amputations and the topography of the PAD.

Material and Method: Observational, descriptive, analytical, retrospective study that estimates the association between the frequency of amputations and the aortoiliac or femoropopliteal topography of PAD, in patients with said diagnosis, hospitalized in the Arteriology service of the National Institute of Angiology and Vascular Surgery (INACV), during the years 2018 and 2019.

Results: In a sample of 220 stories, we found that High Blood Pressure (HBP) and smoking were the most frequent variables, affecting 71.8% and 60.5% of the sample respectively, 40.5% presented an aortoiliac pattern. , of these 55.1% were amputated and 59.5% were femoropopliteal, 58% of which were amputated, for a total of 125 amputations (56.8%). Supracondylar amputation was generally the most performed and infra condylar amputation was performed more frequently in patients with femoropopliteal topography. A more notable influence of smoking on the aortoiliac sector was evidenced. There was a similar probability of amputation for both sectors studied.

Conclusions: the type of occlusive pattern did not show an association with the frequency of amputations, nor the time in which it occurs, or with the associated risk factors.

Keywords: Peripheral Arterial Disease; Amputation; Occlusive Pattern

Abbreviations: PAD: Peripheral Arterial Disease; AEO: Atherosclerosis Obliterans; DM: Diabetes Mellitus; HTN: High Blood Pressure; WHO: World Health Organization; CIOMS: Council of International Organizations of Medical Sciences; IHD: Ischemic Heart Disease; CKD: Chronic Kidney Disease; COPD: Chronic Obstructive Pulmonary Disease

Introduction

Peripheral Arterial Disease (PAD) occurs due to narrowing or blockage of arterial blood vessels, resulting in impaired blood flow to tissues. Around 70 to 80% of affected patients are asymptomatic, which can delay or hinder early diagnosis and initiation of early treatment, thus improving the chances of a positive evolution of the disease. Intermittent claudication is the pathognomonic sign of PAD

and is characterized by pain triggered by walking, in the feet, calves or eventually in the thigh and buttocks of the affected limb, ceasing after rest. A minority of patients progress to critical ischemia or suffer amputation, being more common in men [1]. This pathology includes a range of non-coronary arterial syndromes that are caused by alterations in the structure and function of the arteries at the level of the non-coronary circulation. There are many pathophysiologic processes that can contribute to the formation of occlusions in the

non-coronary arterial circulation; however, Atherosclerosis Obliterans (AEO) continues to be the main cause that affects the aorta and its different branches. The definition of occlusive arterial disease of the lower limbs then refers to any occlusive lesion or stenosis, whether it generates a reduction in blood flow to the extremities [2-4]. Aging is one of the biggest changes in the age pyramid of the human population in recent years. In Brazil, for example, every year, more than 650 thousand people become part of the elderly population.

With the aging process of the human population, there is also an increase in the prevalence of chronic diseases such as: Diabetes Mellitus (DM), High Blood Pressure (HTN), which in turn constitutes risk factors for PAD. In addition to aging, other factors influence the increase in chronic diseases such as smoking, alcoholism, unbalanced diet, and a sedentary lifestyle. It is estimated that after age 40, the risk of PAD increases two to three times every 10 years [5]. PAD is becoming more common in modern society due, in part, to increased life expectancy. This pathology affected 202 million people worldwide in 2010. The growing interest in early diagnosis has occurred because it is related to atherosclerotic disease in other territories, such as coronary, cerebral, carotid, and increases the risk of cardiovascular events (death, acute myocardial infarction, stroke), of the order of 4 to 6% per year, in patients with the disease. Cardiovascular diseases continue to be the main cause of morbidity and mortality in developed and emerging countries, Brazil being no exception. An example of this is that, in 2006, they represented 29.4% of deaths in that country, while neoplasms were 15.1%. Because it is a chronic disease, the resources required for its treatment are high. In the North American population, the estimated cost per year was \$5,955 per patient with a tendency to continue increasing [6]. It is estimated that in the North American population the prevalence of PAD is 4.3%, so by the year 2000, 5 million people were affected, and the numbers continue to rise.

People in low- and middle-income countries have a moderately low rate of this disease compared to high-income countries. In The Global Burden of Disease study, it is reported that more than 30% of deaths and disabilities were attributed to PAD between 2005 and 2015 and that approximately 1 in 10 people over 70 years of age suffer from it [7]. In Cuba, approximately 1,000 amputations are performed each year, with a prevalence in diabetic patients of 15% and according to reports from the World Health Organization (WHO), amputees represent between 0.25 and 1.25% of the world population [8,9]. Without a doubt, patients requiring AMI represent a group of seriously ill individuals. They impose a great impact on the health system, especially when more than 150,000 AMI procedures are performed annually around the world [10]. It is vital for the community and for the development of the scientific and health sector to adequately know the behavior of their diseases, more even when it comes to diseases with serious outcomes and high costs for the health system; these are largely preventable, as is the case of chronic peripheral arterial disease. This disease represents a great problem for public health, due to its close relationship with cardiovascular diseases, which in turn rep-

resent the leading cause of death in the world, added also to the high costs for its management as it is generally diagnosed in phases. Late stages of the disease. Failure to identify it in a timely manner can lead to decreased quality of life in patients in relation to claudicate-type pain and even the loss of a limb.

To the author's knowledge, many studies show high rates of amputations related to peripheral arterial disease; but its association with different locations has not yet been studied and precisely this motivated our research.

Methodological Design

Type of Study

An observational, descriptive, analytical, retrospective study was carried out, with the objective of ruling out the association between the frequency of amputations and the aortoiliac or femoropopliteal topography of PAD, in patients with said diagnosis, hospitalized in the Arteriology service of the INACV, during the years. 2018 and 2019. Universe or population and sample: Universe: All patients with PAD due to AEO of the aortoiliac or femoropopliteal sectors hospitalized in the Arteriology service of the INACV, during the years 2018 and 2019. Sample: A sample of 220 patients who met the proposed inclusion criteria was selected.

- Inclusion Criteria: Patients with a history of PAD due to AEO in Fontaine stages 3 and 4, over 18 years of age, of both sexes.
- Exclusion Criteria: Patients with incomplete medical records (who do not have the necessary data to carry out this study).

Operationalization of Variables

Dependent Variables: Main output variable: Frequency of major amputations for each location: Result of the ratio obtained between the number of amputees and the total number of patients for each location. Secondary output variables: Time in which the amputation occurs for each level: Time elapsed for each level of amputation from the moment of diagnosis until the execution of the exegetical procedure. Keep in mind that the date of diagnosis will be taken as the date that coincides with the day of the first admission for this pathology, in medical history. It will be measured in days, months, and years. Amputation level for each location: Major amputations according to (de Jesús, et al. [11]) are generally defined as those performed above the level of the ankle, whether transtibial, transfemoral, knee disarticulations or hip disarticulations. Spoden [12] conceptualizes amputation as the removal of a limb or part of it and establishes the following levels of lower limb amputations: Hemipelvectomy (cut in line with the pelvis, complete removal of the limb). Hip disarticulation. Transfemoral. Knee disarticulation. Transtibial (infra condylar). Ankle disarticulation. In our work, only major transfemoral (supracondylar) and transtibial (infra condylar) amputations were considered as they are the ones most frequently performed due to AI or FP condition secondary to AEO.

Distal patterns and minor amputations generally respond to other causes of PAD (which are not the objective of our research), mainly diabetic macroangiopathy 12, and 11 associated risk factors: Clinical-epidemiological factors considered to be associated with lower limb amputation due to PAD. The variables explained below were included here: Age: According to the date of birth recorded in medical history and will be expressed in years. Sex: According to the patient's gender: Male and Female. Smoking: According to the WHO, it is a chronic addictive disease associated with tobacco consumption that evolves with relapses. Is considered: Smoker: Person who has smoked at least one cigarette in the last 6 months. Ex-smoker: Person who, having been a smoker, has remained abstinent for at least the last 6 months. Non-smoker: A person who has never smoked or has smoked less than 100 cigarettes during their entire life. Personal pathological history: According to pathologies recorded in medical history: Diabetes mellitus, HBP, dyslipidemia, chronic renal failure, and obesity, others related to the development of PAD.

Independent Variables: (Explanation and/or confusion): Fontaine stage: Only Fontaine stages III and IV were taken into account because they are the terminal phases of the disease that translate into an eminent risk of limb loss. Stage III: It is the pain that appears in the lower extremities of patients in advanced stages of peripheral arterial disease (Fontaine's y and IV) that tends to manifest during rest. Stage IV: 2 variants of ischemic lesions may occur: Ischemic ulcer: Loss of continuity solution Ischemic gangrene: Mummification of tissue due to tissue death. Occlusive steno pattern: It was determined clinically (by examining the pulses) Aortoiliac Femoropopliteal

Statistical Analysis

The information was processed on a Dell brand laptop. Microsoft Word and Excel were used to create text, tables, and graphics. Data processing was carried out with the Statistical Package for the Social Sciences: IBM SPSS Statistics) version 21.0. The results were presented through summary measures for qualitative variables, such as (absolute and relative frequencies) and quantitative variables such as the mean, standard deviation. To establish the degree of statistical association between the qualitative variables, the Chi square test was used, with a significance level of $p < 0.05$. The results were presented in tables and graphs for better understanding.

Ethical Considerations

The study was governed by the principles established in the Helsinki codes [13] and the standards of the Council of International Organizations of Medical Sciences (CIOMS) [14], meeting the ethical requirements of value, scientific validity, respect, and responsibility. All standards of professional medical ethics were respected in carrying out the study. The data used was collected from the clinical history without any variation and with total confidentiality regarding the identity of the patients and the database of the information obtained; it was protected in compliance with computer security protocols. Authorization to review the patients' medical records was requested in writing from the center's management. The work was carried out after being approved by the Research Ethics Committee (CEI) and the Scientific Council of the INACV.

Results

To fulfill the objectives proposed in the study, we included 220 patients. Related to their general characteristics, as shown in Table 1, the variables predominated were HBP ($n=158$; 71.8%), smoking ($n=133$; 60.5%), patients with ischemic lesions ($n=173$; 74.1. %), as well as femoropopliteal patterns ($n=131$; 59.5%). 56.8% of patients undergo amputation. Table 2 shows the factors associated with limb amputations in the AI sector. Of the 89 patients included in this location, 49 ($n=49$; 55.1%) were amputated. The variables that showed a tendency to be a predictor of amputation were ischemic heart disease, cerebrovascular disease, obesity, and Fontaine stage [4]. Despite this, none were statistically significant. Table 3 shows the factors associated with limb amputations in the FP sector. Of the 131 patients included in this location, 76 ($n=76$; 58%) were amputated. No variables were found as possible predictors of amputation in this location. Table 4 shows the factors associated with the steno-occlusive pattern. There were no significant differences in the frequency of amputations in patients in each sector. Infra condylar amputations were performed more in patients with femoropopliteal involvement, while supracondylar amputations were performed in a similar proportion for both sectors. A more notable influence of smoking on the aortoiliac sector was evident compared to the femoropopliteal sector. Steno-occlusive. Vertical Axis: Probability of amputation Horizontal Axis: Time in days Graph 1 outlines the probability of amputation according to time for each sector.

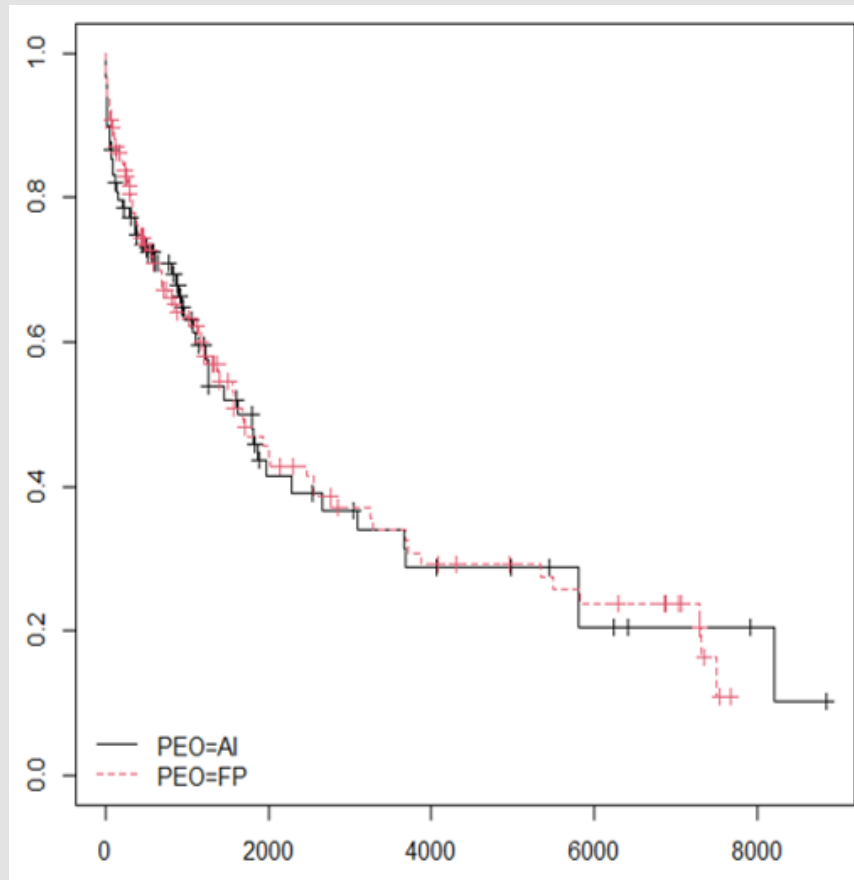
Table 1: General characteristics of the included patients.

#	VARIABLES	MEDIA ± DS (Nº)	%	IC 95%
1	Edad	66,3 ± 11,2	-	-
2	Sexo femenino	92	41,8	35,1 - 48,1
3	HTA	158	71,8	65,7 - 77,9
4	CI	60	27,3	21,2 - 33,2
5	ECV	8	3,6	1,1 - 6,1
6	Obesidad	15	6,8	3,4 - 10,2
7	Hábito de fumar			
	Fumador	133	60,5	53,9 - 67,1
	No fumador	39	17,7	12,6 - 22,8
	Exfumador	48	21,8	16,2 - 27,4
8	Patrón EO			
	Aortoiliaco	89	40,5	33,9 - 47,1
	Femoropoplíteo	131	59,5	52,9 - 66,1
9	Estadio de Fontaine			
	Grado 3	57	25,9	20,0 - 31,8
	Grado 4	163	74,1	68,2 - 80,0
10	Amputados	125	56,8	49,7-63,0

Note: CI: Confidence interval HTA: Arterial Hypertension Mean ± SD: Mean standard deviation. IC: Ischemic heart disease. CVD: Cerebrovascular disease. EO: Steno-occlusive. AI: Aortoiliac FP: Femoropopliteal.

Table 2: Factors associated with limb amputations with AI injury.

#	Variables	Total (89)	No amputados (40)	Amputación mayor (49)	P<0,05
1	Edad (Media ± DS)	65,0 ± 10,6	63,6 ± 11,2	66,1 ± 10,0	-
	Variables	N (%)	N (%)	N (%)	
2	Sexo femenino	35 (39,3)	14 (35,0)	21 (42,9)	-
3	HTA	63 (70,8)	26 (65,0)	37(75,5)	-
4	CI	25 (28,1)	8(20,0)	17 (34,7)	-
5	ECV	4 (4,5)	1 (2,5)	3(6,1)	-
6	Obesidad	8 (9,0)	2(5,0)	6 (12,2)	-
7	Hábito de fumar				
	No fumador	7 (7,9)	2 (5,0)	5 (10,2)	-
	Fumador + Exfumador	82 (92,1)	38 (95,0)	44 (89,8)	-
	Fumador	60 (67,4)	26 (65,0)	34(69,4)	-
	Exfumador	22 (24,7)	12 (30,0)	10 (20,4)	-
8	Fontaine				
	Grado 3	29 (32,6)	18 (45,0)	11(22,4)	*
	Grado 4	60 (67,4)	22 (55,0)	38(77,6)	-



Graph 1: Relationship between the time in which the amputation occurs and the steno-occlusive sector.

Table 3: Factors associated with limb amputations with PF injury.

#	Variabes	Total (131)	No amputación (55)	Amputación mayor (76)	P<0,05
1	Edad (Media ± DS)	67,1 ± 11,5	69,5 ± 10,2	65,4 ± 12,2	-
		N (%)	N (%)	N (%)	
2	Sexo femenino	57 (43,5)	27 (49,1)	30 (39,5)	-
3	HTA	95 (72,5)	46 (83,6)	49 (64,5)	*
4	CI	35 (26,7)	15 (27,3)	20 (26,3)	-
5	ECV	4 (3,1)	2(3,6)	2 (2,6)	-
6	Obesidad	7 (5,3)	3 (5,5)	4 (5,3)	-
7	Hábito de fumar				
	No fumador	32 (24,4)	15 (27,3)	17 (22,4)	-
	Fumador + Exfumador	99 (75,6)	40 (72,7)	59 (77,6)	-
	Fumador	73 (55,7)	29 (52,7)	44 (57,9)	-
	Exfumador	26 (19,8)	11 (20,0)	15 (19,7)	-
8	Fontaine				
	Grado 3	28 (21,3)	10 (18,2)	18 (23,7)	-
	Grado 4	103 (78,6)	45 (81,8)	58 (76,3)	-

Table 4: Factors associated with steno-occlusive level.

#	Variables	Aortoiliaco (89)	Femoropoplíteo (131)	P<0,05
1	Edad (Media ± DS)	65,0 ± 10,6	67,1 ± 11,5	-
		N (%)	N (%)	-
2	Sexo femenino	35 (39,3)	57 (43,5)	-
3	HTA	63 (70,8)	95 (72,5)	-
4	CI	25 (28,1)	35 (26,7)	-
5	ECV	4 (4,5)	4 (3,1)	-
6	Obesidad	8 (9,0)	7 (5,3)	-
7	Hábito de fumar			
	No fumador	7 (7,9)	32 (24,4)	*
	Fumador + Exfumador	82 (92,1)	99 (75,6)	-
	Fumador	60 (67,4)	73 (55,7)	-
	Exfumador	22 (24,7)	26 (19,8)	-
8	Fontaine			
	Grado 3	29 (32,6)	28 (21,4)	-
	Grado 4	60 (67,4)	103 (78,6)	-
9	Amp. Mayores			
	Total	49 (55,1)	76 (58,0)	-
	Supra	43 (48,3)	56 (42,7)	-
	Infra	6 (6,7)	20 (15,3)	*

This is composed of two curves that represent the AI and FP sectors. At time zero, that is, at the beginning of the study, the curves are well up and to the left, and this is 100% and means that all of them are without amputation. As time passes, patients are amputated, and the curves are lowering. By lowering both together, it shows that the location factor was not important over time for the occurrence of amputations. Odds: Probability of amputation, in a certain sector.

ratio AI/FP: Probability of amputation of the aortoiliac sector with respect to the femoropopliteal sector. (Graph 2) For the AI sector, for every 100 people who do not amputate, 122 are amputated, as for the femoropopliteal, 138 are amputated for every 100 who do not do so. The Odds ratio, having a value close to 1, indicates the existence of a similar probability of amputation for each sector.



Graph 2.

Discussion of Results

There is a direct relationship between PAD and major amputations, as (Aboyans, et al. [15,16]) proposed in their respective studies. The coexistence of risk factors predisposing to vascular disease such as smoking, High Blood Pressure (HTN), Ischemic Heart Disease (IHD), hyperlipidemia, genetic factors, among others, causes people who suffer from PAD to have a high rate of amputations given that they do not adequately and stably control the risk factors that produce it (Barrios, et al. [17]). In a Consensus of experts carried out in Spain-Barcelona in 2020; agree that smoking and high blood pressure continue to be highly relevant risk factors for the occurrence of PAD, which coincides with what was found in our work (Frank U et al. [18]). Demonstrated in their study that 25-70% of patients with PAD had atherosclerotic heart disease, with a higher risk of presenting multivessel disease, 14-19% had carotid stenosis greater than 70%, among 10 -23% had renal artery stenosis and increased risk of death. Our research supports what was confirmed by this author regarding the presentation of ischemic heart disease in the AI sector; by demonstrating a predominance of this pathology among amputees in this location, despite not being statistically significant. We did not study the rest of the variables that this author studied (Criqui et al. [19])

During the Council on Epidemiology and Prevention of Atherosclerosis of the American Heart Association demonstrated the incidence of cardiovascular disease such as acute myocardial infarction in patients with PAD of up to 14.9% of patients with said pathology, however, in our work we found a greater presence of ischemic heart disease in the patients studied, probably because other clinical modalities of this disease were included. In Mexico, some risk factors linked to peripheral arterial disease in non-diabetic patients include high blood pressure, smoking and dyslipidemia, a behavior similar to reports in the medical literature and to our work. 4 Another investigation on the general prevalence of peripheral arterial disease carried out by (Sikes, et al. [20]) concluded that it is more prevalent in men than in women, especially in the younger population, since at very advanced ages practically no differences are achieved. Between both groups. Furthermore, the prevalence in men was higher in the more severe degrees of involvement (critical ischemia). It was estimated that the prevalence of intermittent claudication in the 60–65-year-old group was 35%. However, in the population 10 years older than 70-75 years, the prevalence increased to reach 70%. Similar results were obtained in our study where men with PAD prevail, both amputees and non-amputees, with fewer differences between sexes in amputees in the AI sector, as well as there is an increase in the percentage of presentation of this ailment for those over 60 years of age.

In fact, both in a general sense and by sector, in our research, the average age of patients always exceeds the sixth decade of life. These results are like those obtained by (Garcia, et al. [21]), who showed a mean age of 72 ± 13 years, with 79% corresponding to the male sex. (Blanco, et al. [22]), who in a prospective study where 45 patients

with peripheral arterial disease were included, found a mean age of 68 years and a male/female ratio of 3:1. The same author determined in patients with PAD studied with Doppler ultrasound, 30% diabetic, 37% dyslipidemia, 58% hypertensive and 27% heart disease. We obtained similar results regarding heart disease in the 2 sectors studied and in a general sense (Bravo, et al. [23]). Reported that PAD was associated with other pathologies such as arterial hypertension, ischemic heart disease, cerebrovascular ischemia, dyslipidemia, and diabetes, as the most important risk factor, according to the desensitization of non-communicable diseases. Coinciding with our research (De la Torre, et al. [24]). Determined the prevalence of classic cardiovascular risk factors in patients with chronic ischemia of the lower extremities upon arrival at a Vascular Surgery Unit. Demonstrating the prevalence of active smoking and high blood pressure with 45% and 59.4% respectively. Higher percentages of HTA were those obtained by this author. Regarding smoking behavior, it is consistent with the results of this report. (Kim C, et al. [25]) conducted a systematic review of observational studies published between 2008 and 2019.

Search terms included "Peripheral Arterial Disease," "Risk Factors," and "amputation-free survival." This review found that variables such as advanced age, male sex, African American race, low body mass index, nutritional risk and frailty, comorbidities (CVD, kidney disease, DM, COPD, ischemic heart disease, dementia, wide pulse pressure), the severity of PAD and its topography, as well as other treatment-related factors, were identified as risk factors affecting amputation-free survival. These results partially coincide with ours in terms of common variables studied, even though the body mass index that Kim associates as a predictor of amputation when it is low, unlike our research where obesity constituted a tendency to predict exotic surgery in the AI sector. (E Rodriguez, et al. [26]) in a study to determine the risk factors associated with peripheral arterial disease in patients diagnosed by the ankle-brachial index, the mean age of the population was 58.43 ± 16.69 , HBP, DM and dyslipidemia were predictor variables of having an ABI < 0.9 . BMI ≥ 25 kg/m² and sedentary lifestyle, although they were associated in the univariate analysis, did not constitute predictor variables. Coincidentally with our research, age over 60 years and HTN were predominant variables while obesity represented a predictive trend of amputation in the AI sector. Other associated comorbidities such as DM were not included in our research, due to the characteristic profile of patients admitted to the INACV Arteriology service, where hospitalizations of patients with this diagnosis are rare.

The age behavior coincidentally coincides with (Pichín, et al. [27,28]) obtained a predominance of male patients while in the study by (Nishimura, et al. [29]) the female sex was more frequent. In descending order of frequency, HTN was obtained in this study as the most frequent personal pathological history, followed by smoking, DM, dyslipidemia, CKD, and a sedentary lifestyle. In the reviewed articles [26-32] similar frequency data were obtained, unlike (Martínez, et al. [28]) who obtained 100% smokers in their study. A high prev-

absence of these diseases is described in the literature; more currently, given the poor dietary habits and lifestyle of the population, all of them are described to a greater or lesser extent related to PAD. (Chen, et al. [32]) obtained a positive relationship between overweight and obese patients, with respect to the presence of PAD, coinciding with the present research when studying the behavior of this variable in the AI sector. However, (Wassel, et al. [33]) did not obtain this relationship. According to the present results, patients suffering from arterial hypertension have a higher risk of developing peripheral arterial disease as a complication. (Chen, et al. [32]) found a positive relationship between HBP and PAD, coinciding with the results of the present investigation, despite not demonstrating the predictive quality for amputation of this variable in our study, especially in the femoropopliteal sector where it is demonstrated. a statistically significant difference in favor of non-amputees.

Smoking, according to Chen, had no statistical relationship with low ABI, contrary to what was obtained by other authors. (Álvarez, et al. [33-36]) in their study determine the frequency found for smoking (47.3%). This author suggests that smoking constitutes a powerful risk factor for PAD, four times greater in smokers than in non-smokers. In our research, a higher percentage of smokers is obtained, which can be justified by the wide spread of this harmful habit in the Cuban population. It should be noted that in this work a possible association between smoking and PAD was found that was most marked in the IA sector, as in many works on the subject where this independent risk factor is the most associated with this disease [37,38]. However, an association between this variable and the frequency of amputations could not be demonstrated. (E. Castrillón, et al. [11]) in a study published in 2018 carried out in Southern Colombia, evaluated 158 records of patients between 30 and 95 years old with peripheral arterial disease undergoing lower limb angioplasty. The age of greatest presentation was more than 65 years, coinciding with our study where the average age of presentation of PAD was 61 years. It is also coincidental that HBP is the most presented risk factor among those studied and the femoropopliteal sector is the most affected. Medical literature states that peripheral vascular disease constitutes a high risk of major lower limb amputation in patients without the possibility of revascularization.

Exegetic surgery in turn leads to a potentially disabling process, considered worldwide as a significant public health problem. Of all amputations, lower limb amputations are the most common [39]. We agree with the results found in the study carried out by (Vega, et al. [40]) which included 145 amputee patients, regarding the variables sex (male predominance), HBP and smoking habit (most representative variables among those studied), and regarding the greater representativeness of supracondylar amputations. (Shin, et al. [41]) conclude after reviewing the 101 publications that support their research, that HBP, IHD, CVD and PAD are the predictor variables of higher rates of major amputation. This author obtained similar results, mainly in the AI sector where IC and CVD showed a certain tendency to consti-

tute predictive variables of amputation, while the amputations performed in our study respond to PAD as a cause. Shin also reports that major amputations are related to the variables, advanced age, more severe ischemia, anemia, sepsis and/or stroke, partially coinciding with our research, as it did not study the variables anemia and sepsis, making it impossible for us to issue a judgment about it. (Kennedy, et al. [42]) conducted a two-year retrospective prevalence cohort involving 79 patients undergoing major lower limb amputations. Of the 79 patients, 52 were men and 27 were women. The mean age at the time of surgery was 72 years (range 34-99 years). 58% suffered from diabetes mellitus, 35% from heart failure, 39% from chronic kidney disease (CKD) and 13% from Chronic Obstructive Pulmonary Disease (COPD).

Unlike our research, within the coincident variables in our studies, there were a greater number of cases with CKD. The study by (Ali-jarrah, et al. [43]) managed to identify the medical records of patients undergoing Major Lower Limb Amputation (MLAM) due to ischemic cause and Diabetic Foot Syndrome (DFS). 140 patients underwent AMMI including 110 below-knee (ADR) and 30 above-knee (AAR) amputations. Unlike our Study in which supracondylar amputation predominated. This is justified by the predominance of diabetic patients in this investigation (89.3%). 61.4% were men, the average age of amputee patients was 63 years (62.1 years for ADR) (66.0 years for AAR). There was a high prevalence of arterial hypertension (80.3%). 46% had ischemic heart disease, 31.6% had congestive heart failure, and 27.7% had cerebrovascular disease. Almost a quarter of the patients had chronic kidney disease (CKD). Furthermore, differentiating from our research are the higher percentages of patients with IC, CVD and CKD, which may respond to an underreporting of cases with these pathologies in our environment. We agree regarding the presentation regarding sex and age. (F. Regalado, et al. [43]) in their study conclude that the mean age of the patients was 65 ± 15 years, and 79 patients (62%) were men; 71 patients (56%) had HTN. Smoking was recorded as a prevalent risk factor in 50% of the patients and 12% more who had already given up the habit at the time of the initial evaluation. 32.57% of patients had extensive lesions.

It also reported that in 96 patients, 75.60%, the amputations were performed above the knee and that in 31 patients, 24.40%; the amputations were performed below the knee. In this study, there was a predominance of amputee patients over 65 years of age, 51.1%, and a predominance of smoking amputees 63 for 50%; results are like ours. (Gómez, et al. [44]) in their study, obstructions in the femoropopliteal sector predominated and it was necessary to sacrifice the limb due to amputation of the thigh in 35.6%, contrary to our work where 76 patients were amputated, equivalent to 58% but coinciding about the most affected sector. Furthermore, Gómez reported a predominance of patients with ischemic lesions, 67%, of whom 51.5% had to undergo limb amputation, a result like ours, unlike the percentage of amputees with ischemic lesions, which is greater than 70%. In both sectors studied in our study. In the research by (Sereday, et

al. [45]), the average age of the amputee population was 62.5 ± 13.0 years. In non-diabetics, the most frequent amputation is reported to be above the knee for 56.47% of patients, followed by infra condylar amputations with 14.7%; Similar behavior was obtained in our study. (Mc Cook, et al. [46]) carried out an epidemiological investigation in 218 patients who had undergone major amputation, supra or infra condylar of the lower limbs. 61% of the patients were male and 39% were female. Results similar to ours where, regardless of the sector, more men amputate than women. The study carried out by (Nonell, et al. [47]) reported that supracondylar amputation was the most performed (in 64.1% of their patients).

Depending on sex, we found that it is performed more in women (54.7%) (Unlike of our study where more men amputated), there was a predominance of amputees due to vascular causes and lower limb amputations predominated in the age group of 60 years and over with 84.4% of the cases. 60.9% of amputees were hypertensive and 60.9% of amputee patients were smokers. In a general sense, with respect to the aspects, there is similarity between both studies. Contrary to our research and coinciding with that of (L. Nonell, et al. [47]), the predominance of female amputees over 60 years of age converges with the findings of other authors, such as (N) Shatnawi, et al. [48]) and (MH Arambewela, et al.) Nonell also found a higher rate of supracondylar amputation in non-Diabetics, HTN and smoking were the risk factors most identified among patients with major amputation, coinciding with our work. (Hernández, et al. [49]), in his study on the behavior of non-traumatic lower limb amputations, found a predominance of diabetes mellitus (60%) and arteriosclerosis obliterans (35%) as the first causes of major amputation. Supracondylar amputations predominated (69%). We obtained identical results despite not including diabetic patients. (Cabrera, et al. [50]) in their study of 150 patients who had been admitted to the Arteriology and Diabetic Angiopathy services of the National Institute of Angiology and Vascular Surgery over a period of five years, determined a predominance of male patients (n= 44; 61.97%); and regardless of sex, a greater frequency of patients over 60 years of age.

71 of them underwent major amputation. Supracondylar amputations predominated (69.6%). Similar results are recorded in our research. In the study by (Estévez, et al. [51]) on the tendency towards lower limb amputations, there was a predominance of the male sex with a slightly increasing trend, coinciding with our study. Diabetic Angiopathy and obliterative atherosclerosis were the diseases that most frequently caused amputations, thus reporting the Infra condylar level of amputation in a greater proportion, and their trend was downward in relation to the supracondylar level of amputation, the trend of major amputations was It behaved upwards in those under 60 years of age and downwards in the group aged 70 and over. These results could coincide with ours considering the increasing trend of supracondylar amputations, especially in the sixth decade of life. Aortoiliac disease occurs more frequently after the sixth decade of life. It mainly affects male patients with a predisposition to peripheral arte-

rial disease, exposed to risk factors such as smoking, systemic arterial hypertension, dyslipidemia and obesity, results that we also found.79 Various studies of clinical cases reveal the association of aortoiliac disease with risk factors such as advanced age, hypertension, smoking and obesity, elements with which we agree. 80. 81 In the research study carried out by (Rodriguez, et al. [52]) characterizing aortoiliac steno-occlusive disease, the most frequent risk factors were smoking (73.9%) and high blood pressure (74.4%); The average age was 65 years.

We obtained similar Results. (Hernández, et al. [53]) report that in their study the most frequent occlusive pattern was the femoropopliteal in 31 patients for 47.7%, they also reported smoking as the only risk factor present in all the patients studied. We obtained similar results in our research. (Leo, et al. [54]) in a study on the results of hybrid procedures to treat PAD over a period of 5 years, in 87 patients revascularized for this pathology, a higher incidence was demonstrated in males, where involvement of the femoropopliteal sector also predominated, coinciding with our studio. (Cabrera, et al. [39]) carried out an investigation about femoropopliteal disease in patients with acute thrombotic arterial ischemia of the lower limbs, in a series of 243 patients over a period of 10 years, finding that major amputation is performed in 74.7 % of patients who presented said acute event. This high percentage of exotic surgery is justified by the high incidence of atherosclerotic involvement at this level, confirmed in the results of our research where the topography most frequently affected by PAD is the femoropopliteal. (Cheng SW, et al. [16]) in a prospective vascular registry consisting of 510 Chinese patients with PAD, revealed a male/female ratio of 1.6:1.0 with a mean age of 72 years. The predominant pattern was femoropopliteal occlusive disease (49%). Half of all patients had tissue loss at the presentation. Smoking affected 59%, hypertension (55%). Male patients were mostly smokers (80%) with a higher proportion of aortoiliac disease. We observed great similarity in our research.

Medical literature refers to ischemic manifestations of the lower limbs as the most frequent signs of this disease; it is estimated that it is present in approximately 400 to 450 million patients per inhabitant per year, a worrying fact, since they constitute causes for limb amputations. (Pinto, et al. [48,54]) in his analytical study of patients undergoing lower limb revascularization between 2012 and 2014 found grade IV according to the Leriche Fontaine classification as a predictor variable of amputation and mortality. Our results were identical, mainly at the aortoiliac level. According to the Spanish multidisciplinary consensus guide on peripheral arterial disease corresponding to 2012, none of the studies, since the last 40 years, have altered the impression that only 25% of patients will deteriorate significantly, progressing to clinical states. more serious, which is more frequent in the first year of diagnosis (7-9%) compared to 2-3% annually from the first year onwards. 5-10% of patients with PAD will progress to critical ischemia (defined as grades III and IV of the Fontaine classification), of which 1-3% will require amputation, which represents a

rate of 30%³⁰. A similar result is shown by (Monteiro, et al. [55-61]) who estimated a mean amputation time of ± 27 months and Adame²⁵ when they state that 30% of patients affected by critical ischemia of the lower extremities suffer a major amputation during the first year after diagnosis. We find something similar in our work, visible through Graph 1, which shows the survival curves where precisely the time they persist with a vertical descent (± 2 years) coincides with the most accelerated rate of amputations and the point from which they begin.

To become horizontal, marks the deceleration of the pace of amputation. It is striking that this deceleration point coincides precisely with 2 years, which could be interpreted as a similarity with previous studies where they estimate an average amputation time from diagnosis, between 12 to 27 months. The time from the onset of the disease to the occurrence of lower limb amputation is highly variable and multifactorial according to reports in the medical literature, fundamentally motivated by the initial subclinical phase of PAD. For this reason, the data currently available regarding limb survival are limited to describing the behavior of reputation and not the time elapsed from diagnosis to the performance of the first amputation. This justifies the limited information on the topic that tends to become, in my opinion, totally new or never studied, when it comes to the relationship between the moment of amputation and steno-occlusive sectors. In recent years, a significant increase in patients consulting for peripheral arterial disease has been observed, especially a high prevalence in the elderly population, with deterioration in quality of life, risk of limb amputation and worse overall survival, due to the slow and progressive obstruction of the arterial lumen, determining ischemia of the limbs. Its relevance is reflected in the large number of studies carried out. Failure to identify the disease in a timely manner can lead to a decrease in the patient's quality of life, ranging from claudicate-type pain to the loss of a limb.

Added to this, without forgetting its close relationship with cardiovascular diseases, it generates an increase in the patient's cardiovascular morbidity and mortality, becoming one of the markers of cardiovascular risk worldwide. It is necessary, then, to raise awareness among patients and health-providing entities of the recognition, timely management, and care of this silent disease to improve the health of patients and prevent catastrophic outcomes.

Conclusion

1. The type of occlusive pattern did not show an association with the frequency of amputations, the time in which the amputation occurs, or with risk factors associated with mutilations.
2. There was a high frequency of amputated patients (56.8%), with similar percentages for both steno-occlusive sectors.
3. The percentage value of supracondylar amputations was similar for both sectors; however, in the femoropopliteal sector the Infra condylar level predominated.

References

1. Camparoto ML, López CR, Marafon CB, Silingovschi GL, Ramos IA, et al. (2019) Doença arterial obstrutiva periférica: descrição de umasérie de casos para profissionais da área médica. *SaBios-Revista de Saúde e Biologia* 14(1): 27-33.
2. Bolaños DI, Alejandra D, Chaves C, Luisa D, Vanegas G, et al. (2019) Enfermedad arterial periférica en miembros inferiores. *Revista medicina legal de costa rica Scielo.sa.cr* 36(1).
3. (2019) Guía de diagnóstico y tratamiento de la enfermedad arterial oclusiva crónica de las extremidades inferiores. Asociación colombiana de angiología y cirugía vascular.
4. (2017) Guía de práctica clínica GPC diagnóstico y tratamiento de la enfermedad arterial periférica de miembros inferiores. Evidencias y recomendaciones.
5. Mota MI, Mota I, Matheus F, Max O, Villar L, et al. (2019) Ocorrência de sintomas depressivos am paciente idosos com doença arterial periférica. *Revista Eletrônica Acervo Saúde* 7(32): e1262.
6. De Carvalho Mota T, Diego J, Santos M, De B, Cunha Da Silva J, et al. (2017) Doença arterial obstrutiva periférica: revisão integrativa. *53(1): 120-125.*
7. Castrillon-Peña EL, Poveda-Conde LC, Suaza-Vallejo MC, Vanegas-Vidal M, Barrios-Torres JC, et al. (2019) Experiencia de la angioplastia en miembros inferiores en la enfermedad arterial periférica en una clínica privada en el sur de Colombia. *Rev cir* 71(3): 210-215.
8. Sereday M, Damiano M, Lapertosa S, Cagide A, Bragnolo JC, et al. (2009) Amputaciones de Miembros Inferiores en diabéticos y no diabéticos en el ámbito hospitalario. *Revista alad com* 13(1): 9-15.
9. Shin JY, Roh SG, Lee NH, Yang KM (2017) Influence of epidemiologic and patient behavior-related predictors on amputation rates in diabetic patients: Systematic review and meta-analysis: Systematic review and meta-analysis. *Int J Low Extrem Wounds* 16(1): 14-22.
10. Aljarrah Q, Allouh MZ, Bakkar S, Aleshawi A, Obeidat H, et al. (2019) Major lower extremity amputation: a contemporary analysis from an academic tertiary referral centre in a developing community. *BMC Surg* 19(1): 170.
11. Jesús-Silva SG de, Oliveira JP de, Brianezi MHC, Silva MA de M, Krupa AE, et al. (2017) Análise dos factores de risco relacionados às amputações maiores e menores de membros inferiores em hospital terciário. *J Vasc Bras* 16(1): 16-22.
12. Alonso-Pérez M, Estevan J, Domínguez L (2003) Epidemiología, formas de presentación de la patología arteriosclerótica oclusiva del sector femoropoplíteo distal. *Rev Elsevier es* 55(Suppl 1): S5-S19.
13. (2013) World Medical Association. Declaration of Helsinki. Ethical principles for medical research involving human subjects. 64th WMA General Assembly. Fortaleza, Brazil, October 2013. Updated Helsinki guidelines for clinical research gets mixed reviews. *JAMA*.
14. Cuello Fredes MA, Ramos Vergara P, Etcheverry Borges J (2017) Actualización de las pautas CIOMS. *ARS Médica* 42(3): 55-59.
15. Aboyans V, Ricco JB, Bartelink M-LEL, Björck M, Brodmann M, et al. (2018) Guía ESC 2017 sobre el diagnóstico y tratamiento de la enfermedad arterial periférica, desarrollada en colaboración con la European Society for Vascular Surgery (ESVS). *Rev Esp Cardiol* 71(2): 111.e1-111.e69.
16. Criqui MH, Aboyans V (2015) Epidemiology of peripheral artery disease. *Circ Res* 116(9): 1509-1526.
17. Barrios V, Beato P, Brotons C, Campuzano R, Merino-Torres JF, et al. (2022) Comprehensive management of risk factors in peripheral vascular disease. *Expert consensus Rev Clin Esp (Barc)* 222(2): 82-90.
18. Frank U, Nikol S, Belch J, Boc V, Brodmann M, et al. (2019) ESVM Guideline on peripheral arterial disease. *Vasa* 48(Suppl 102): 1-79.

19. Criqui MH, Matsushita K, Aboyans V, Hess CN, Hicks CW, et al. (2021) Lower extremity peripheral artery disease: Contemporary epidemiology, management gaps, and future directions: A scientific statement from the American heart association. *Circulation* 144(9): e171-e191.
20. Sikes JM, Newmark PA (2013) Restoration of anterior regeneration in a planarian with limited regenerative ability. *Nature* 500(7460): 77-80.
21. García Martínez L, Fernández-Samos Gutiérrez A, García Gallego A, Pelaz García M, Sierra Vega A, et al. (2017) Diseño, validación y aplicación clínica de un cuestionario de conocimiento (ConocEAP) de los pacientes con enfermedad arterial periférica. *Angiología* 69(1): 4-11.
22. Blanco Alonso MJ, González Fueyo R, Peña Cortés G, Alonso Argueso N, Sanz Pastor F, et al. (2012) ¿Es útil el eco-Doppler portátil en el diagnóstico de enfermedad arterial periférica? Estudio de validación. *Angiología* 64(5): 193-198.
23. Bravo Ruiz E, Vega de Céniga M, Izaguirre Loroño M, Casco Aguilar C, Estallo Laliena L, et al. (2010) Factores de riesgo cardiovascular en isquemia crónica de extremidades inferiores: importancia de la intervención del cirujano vascular. *Angiología* 62(1): 3-8.
24. De la Torre Puente C, Triana Mantilla ME, Rodríguez Villalonga LE, Arpañón Peña Y, Almeida Hernández L, et al. (2017) Enfermedades vasculares periféricas y niveles de calidad de vida en el municipio Diez de Octubre. *Rev Cuba AngiolCirVasc* 18(1): 55-70.
25. Kim C, Yang YS, Ryu GW, Choi M (2021) Risk factors associated with amputation-free survival for patients with peripheral arterial disease: a systematic review. *Eur J Cardiovasc Nurs* 20(4): 295-304.
26. Rodríguez Venegas E de la C, Denis Piedra DA, Ávila-Cabreja JA, Hernández-García OL, Vitón-Castillo AA (2021) Factores de riesgo asociados a la enfermedad arterial periférica en pacientes diagnosticados mediante índice tobillo brazo. *RevCubanaMed* 60(1): e1509.
27. Pichín A, Goulet L, Suárez C, Franco MC (2017) Pacientes con cardiopatía isquémica y enfermedad arterial periférica asintomática determinada mediante el índice tobillo-brazo. *Medisan* 21(1).
28. Martínez Díaz Y, Fernández Quintana L de la C, Cabrera Zamora JL, Almeida Hernández L (2018) Calidad de vida en pacientes con enfermedad arterial periférica de miembros inferiores en estadios iniciales. *Rev Cuba AngiolCirVasc* 19(1): 17-27.
29. Nishimura H, Miura T, Minimizada M, Ueki Y, Abe N, et al. (2017) Ankle-brachial index for the prognosis of cardiovascular disease in patients with mild renal insufficiency. *Intern Med* 56(16): 2103-2111.
30. Silva Filho PJ da, Teodoro ECM, Pereira ECA, Miranda VC dos R (2021) Prevalence of peripheral arterial disease and associated factors in people with type 2 diabetes. *Fisioter Em Mov* 34: e34122.
31. Crespo-Salgado JJ, Delgado-Martín JL, Blanco-Iglesias O, Aldecoa-Landesa S (2015) Guía básica de detección del sedentarismo y recomendaciones de actividad física en atención primaria. *Aten Primaria* 47(3):175-83.
32. Chen J, Mohler ER, Xie D, Shlipak M, Townsend RR, et al. (2016) Traditional and non-traditional risk factors for incident peripheral arterial disease among patients with chronic kidney disease. *Nephrol Dial Transplant* 31(7): 1145-1151.
33. Wassel CL, Ellis AM, Suder NC, Barinas-Mitchell E, Rifkin DE, et al. (2017) Femoral artery atherosclerosis is associated with physical function across the spectrum of the ankle-brachial index: The San Diego Population Study. *J Am Heart Assoc* 6(7): e005777.
34. Yamaki M, Sato T, Fujii H (2015) Lower ankle-brachial index is associated with poor sleep quality in patients with essential hypertension. *Am J Cardiovasc* 5(1): 77-82.
35. Lu Y, Zhu M, Bai B, Chi C, Yu S, et al. (2017) Comparison of Carotid-Femoral and Brachial-Ankle Pulse-Wave Velocity in Association with Target Organ Damage in the community dwelling Elderly Chinese: The Northern Shanghai Study. *J Am Heart Assoc* 6: e004168.
36. Álvarez Prats M, Triana Mantilla ME, Rodríguez Villalonga LE, Ramos Morales LE, Arpañón Peña Y (2021) Pesquisa de enfermedad arterial periférica de miembros inferiores en personas mayores de 50 años. *Rev cubana AngiolCirVasc* 22(1): e296.
37. Carter BD, Abnet CC, Feskanich D, Freedman ND, Hartge P, et al. (2015) Smoking and mortality--beyond established causes. *N Engl J Med* 372(7): 631-640.
38. Rentería E, Jha P, Forman D, Soerjomataram I (2016) The impact of cigarette smoking on life expectancy between 1980 and 2010: a global perspective. *Tob Control* 25(5): 551-557.
39. Chiriano JT, Abou-Zamzam AM (2015) Lower Extremity Amputations En: *Essentials of Vascular Surgery for the General Surgeon*. New York, NY: Springer New York, pp. 119-132.
40. Vega García R, Torres Tamayo CN, González Martínez YT, Borroto Pacheco J, Mederos González ME (2017) Características clínicas y epidemiológicas de los pacientes amputados en el Hospital General de Ciego de Ávila. *Medigraphic.com* 23(4): 29-35.
41. Shin JY, Roh SG, Sharaf B, Lee NH (2017) Risk of major limb amputation in diabetic foot ulcer and accompanying disease: A meta-analysis. *J Plast Reconstr Aesthet Surg* 70(12): 1681-1688.
42. Kennedy G, McGarry K, Bradley G, Harkin DW (2019) All-cause mortality amongst patients undergoing above and below knee amputation in a regional vascular centre within 2014-2015. *Ulster Med J* 88(1): 30-35.
43. Regalado Solís F, Ziga Martínez A, Olivares Cruz S, Sierra Juárez MÁ, Santillán Aguayo E, et al. (2021) Mortalidad y comorbilidades perioperatorios en pacientes con amputaciones de vasculares. *Revista Mexicana de Angiología* 49(3): 80-87.
44. Gómez Márquez GJ (1974) Obliteraciones Crónicas del Sector Femoro - Poplíteo. *Revista médica hondureña* hn 42: 151-166.
45. Sereyay M, Damiano M, Lapertosa S, Cagide A, Bragagnolo JC (2009) Amputaciones de Miembros Inferiores en diabéticos y no diabéticos en el ámbito hospitalario. *Revista alad.com* 13(1): 9-15.
46. Mc Cook Martínez J, LopezMaranges L, de Armas Vicent Y, Edreira Perez J, Gonzalez Garcia A, et al. (1983) Amputaciones Mayores de los Miembros Inferiores por causas vasculares. Estudio Epidemiológico. *RevCubMed. Sld.cu*.
47. Nonell Martínez L, Valdés Pérez C, Fabelo Martínez A, Figueroa Martínez A, Pérez Leonard D, et al. (2021) Pacientes amputados de miembros inferiores por causas vasculares en el municipio Cerro. *Rev Cuba AngiolCirVasc* 22(2): e205.
48. Shatnawi NJ, Al-Zoubi NA, Hawamdeh HM, Khader YS, Garaibeh K, et al. (2018) Predictors of major lower limb amputation in type 2 diabetic patients referred for hospital care with diabetic foot syndrome. *Diabetes Metab Syndr Obes* 11: 313-319.
49. Hernández Díaz AR, Acosta Díaz L, Hernández Rojas AL, Moreira Martínez MM, Rodríguez López M (2021) Comportamiento de las amputaciones no traumáticas de miembros inferiores durante 2019-2020. *Revienc medicas Pinar Río* 25(3): e5048.
50. Cabrera Zamora JL, Hernández Seara A, Viña Cisnero H, Hondares Guzmán M del C, López Díaz M, et al. (2013) Características de las amputaciones mayores en pacientes con isquemia arterial agudas trombótica de miembros inferiores. *Rev cuba Angiol y cirvasc* 14(1).
51. Estévez Touzard M, Zacca Peña E, Mc Cook Martínez J (1994) Tendencia de las amputaciones mayores en el Instituto Nacional de Angiología y Cirugía vascular. *Rev cuba higepidemiol* 32(1/2): 11-18.

52. Rodríguez RY, Rodríguez Mayoral JA (2020) Caracterización de la enfermedad estenooclusiva aortoiliaca. Rev Cuba AngiolCirVasc 21(2): 1-14.
53. Hernández Seara A, Cabrera Zamora JL, Viña Cisneros H, Hondares Guzmán M del C, López Díaz M, et al. (2013) Caracterización de los pacientes ingresados por isquemia crítica de los miembros inferiores. Rev cuba Angiol y cirvasc 14(1).
54. González-de Leo S, Montbriand J, Eisenberg N, Roche-Nagle G (2022) Resultados de Procedimientos Híbridos para tratar Enfermedad Arterial Periférica: experiencia de un centro a 5 años. Cir Cir 90(5): 610-616.
55. Pinto Sousa P (2021) Marcadores analíticos que condicionam os resultados de cirugía de revascularização em doentes com doença arterial periférica. Rev Angiología e Cirugia Vasculat Publicação Oficial SPACV 17(2): 117-124.
56. Monteiro HC, Silva V de FA, Ferreira MB, Barbosa D, Martins CA, et al. (2018) Perfil dos pacientes amputados de miembros inferiores atendidos por um centro de referencia: estudo clínico e epidemiológico. RFS 6(1): 38-47.
57. Cabezuelo Adame X, Vega de Ceniga M, Aramendi Arietaaraunabeña C, González Fernández A, Estallo Laliena L (2018) Pronóstico global de los pacientes con isquemia crítica de las extremidades inferiores. Angiología 70(3): 113-119.
58. Martínez J, Díaz JJ, Luján VP, Fernández MR, Ramírez E (2017) Enfermedad oclusiva aortoiliaca o síndrome de Leriche. Rev Colomb Cir 32(3): 214-222.
59. Ruano Restrepo MI, Londoño Castro ML, Pineda Muñoz M, Rentería Daboin J (2018) Caso clínico de interés: síndrome de Leriche. Una manifestación inusual de la enfermedad arterial periférica. Biosalud 17(2): 105-111.
60. Azañero-Haro J (2022) El Síndrome de Leriche: Su diagnóstico en la Enfermedad Arterial Periférica. Gac médica boliv 45(1): 75-78.
61. (2020) Guía española de consenso multidisciplinar en Enfermedad Arterial Periférica de extremidades inferiores. Fesemi.org.

ISSN: 2574-1241

DOI: 10.26717/BJSTR.2024.56.008862

Jose Luis Cabrera Zamora. Biomed J Sci & Tech Res



This work is licensed under Creative Commons Attribution 4.0 License

Submission Link: <https://biomedres.us/submit-manuscript.php>



Assets of Publishing with us

- Global archiving of articles
- Immediate, unrestricted online access
- Rigorous Peer Review Process
- Authors Retain Copyrights
- Unique DOI for all articles

<https://biomedres.us/>