

Caregiver Burden Among Informal Caregivers of Women with Breast Cancer

Israel Olatunji Gabriel*¹, Joel O Aluko² and Mohammed Ibrahim Okeme³

¹Department of Anaesthesia, Ahmadu Bello University Teaching Hospital, Nigeria

²The Department of Nursing, University of Ilorin, Nigeria

³Chief Nurse Educator, Ahmadu Bello University Teaching Hospital, Nigeria

*Corresponding author: Israel Olatunji Gabriel, Assistant Chief Nurse Educator, School of Post Basic Nursing Programmes (Anaesthesia), Ahmadu Bello University Teaching Hospital, Zaria, Kaduna State, Nigeria



ARTICLE INFO

Received:  February 08, 2019

Published:  March 01, 2019

Citation: Israel Olatunji Gabriel, Joel O Aluko, Mohammed Ibrahim Okeme. Caregiver Burden Among Informal Caregivers of Women with Breast Cancer. Biomed J Sci & Tech Res 15(3)-2019. BJSTR. MS.ID.002704.

Keywords: Cancer; Oncology; Caregiver burden; Informal caregivers; Self-efficacy; Social support

Abbreviations: ZBI: Zarit Burden Interview; SSRS: Social Support Rating Scale; GSE: General Self-Efficacy Scale; SPSS: Statistical Packages for Social Sciences

ABSTRACT

Purpose: Breast cancer presents a typical picture of the enormity of cancer burden on the Nigerian nation. This study describes the impact of caregiving burden on the informal caregivers of women with breast cancer.

Methods: Two hundred and twenty-six dyads attending the oncology clinic of the Ahmadu Bello University Teaching Hospital were recruited through a convenience sampling technique. Zarit Burden Interview (ZBI), Social Support Rating Scale (SSRS), and General Self-Efficacy Scale (GSE) were used to measure caregiver burden, social support and self-efficacy respectively. A score above 24 in ZBI was considered a high level of burden. Data were analysed using the Statistical Packages for Social Sciences (SPSS) version 22.

Results: The patients were 108 whose average age was 63.7 (14.9). Of the 118 informal caregivers, 89 (75.4%) were women and 29 (24.6%) were men. Their mean age was 41.9. The participants reported high care burden (37.1). 44% of the variance of the caregiver burden was explained by the monthly family income, payment type for treatment, relationship to the patient, caregivers' self-efficacy, and social support.

Conclusion: The study revealed a high level of caregiver burden among informal caregivers. Assessments of the caregiver burden and targeted interventions, such as increasing self-efficacy and social support in low-income areas are necessary to identify and alleviate the caregiver burden.

Background

Breast cancer is the most common cancer, and the leading cause of cancer death among women globally [1]. In 2018, there are over 2 million new breast cancer cases globally and 24.2% of all types of cancers; 54,900 new cases diagnosed in the United Kingdom (UK), 330,080 in the United State of America (USA), [2]. The incidence rate ranges from 29.3 per 100,000 people in North Africa to 22.4 per 100 000 in Sub-Saharan Africa [3,4]. The number of new cases and mortality rate from breast cancer is a result of population growth and increased life-span in both high- and low-income countries [5]. Before now, breast cancer is considered to be a disease of affluence that affects the developed countries but has now cut across all

socioeconomic levels with burden more in developing countries such as Nigeria [6]. The increasing incidence of breast cancer in Nigeria and the paucity of the specialist man-power and structural facilities imply that the caregiving burden rests mostly on family caregivers/informal caregivers. Breast cancer presents a typical picture of the enormity of cancer burden on the Nigerian nation [7].

Breast cancer affects not just those who have the disease but also their informal caregivers who provide care. The informal caregivers perform many activities that used to be done in the health facilities by health workers [8]; they can help in drugs administration, counselling, dressing, and other treatment plans

all through the different phases of managing the condition [9]. As most of them assume caregiving role without adequate training and are expected to meet up with caregiving demands without much help, they experience psychological worries, increasing rate of physiological illness, and social problems [10]. Studies in the developed countries had established that informal caregivers of patients with cancer are vulnerable to all kinds of psychological (e.g., anxiety, stress, depression) and physical (e.g., burn-out, increased mortality, loss of weight, poor immune functioning, and insomnia) burden [11,12]. However, little is known about problems facing the informal caregivers of patients with cancer in sub-Saharan Africa, particularly Nigeria.

Study Aim

The study aimed to describe the impact of caregiving burden on the informal caregivers of women with breast cancer. The main objectives were to:

- describe the level of the caregiver burden and characteristics of cancer patients and caregivers;
- identify the factors related to the caregiver burden among

the characteristics of patients and caregivers, caregivers' resources, and self-efficacy; and

- determine the relationship between the study variables (caregiver burden, social support, and self-efficacy).

The Conceptual Framework

The conceptual model of this study is based on the work of Lazarus and Folkman (Figure 1), which suggests that an individual's response to stress is affected by primary appraisal, secondary appraisal, and available resources [13]. According to this model, primary appraisal, secondary appraisal, and available resources interact and ultimately impact the individual's stress response. The caregiver assesses the effects of various aspects of caregiving on himself/herself in the primary appraisal, which include potential factors of patients and caregivers. The patient factors include demographic factors; payment type for treatment; and disease characteristics. The caregivers' characteristics include the demographic features of caregivers, employment status, and family income. The transaction between a person and his/her social or illness-related factors such as breast cancer can influence how individuals appraise and cope with the illness [14] (Figure 1).

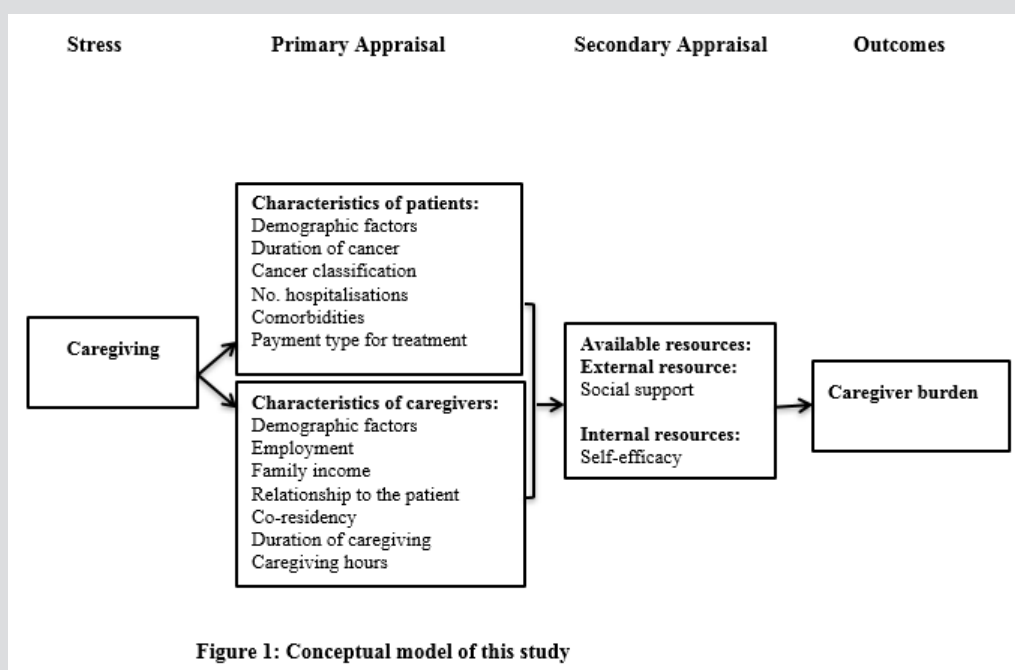


Figure 1: Conceptual model of this study.

Methods

Design

The study utilised a descriptive design. The total numbers of participants were 226 dyads attending the oncology clinic of the Ahmadu Bello University Teaching Hospital Zaria, Nigeria. The dyads were recruited through a convenience sampling technique after meeting the inclusion criteria for participation.

Participants

The dyads were recruited between March and September 2017. The inclusion criteria for patients were:

- a primary diagnosis of breast cancer for at least six months; and
- willing to participate in this study.

The inclusion criteria for caregivers were:

- a) being the informal caregiver;
- b) adults of age 18 years or above; and
- c) living with the patients during caregiving.

Exclusion criteria were:

- a) paid caregivers;
- b) caregivers with severe functional or cognitive impairment; and
- c) caregivers with comorbidities that involved a heavy burden, which increased their physical vulnerability.

Measurements

Demographic Variables: The demographic data and clinical characteristics collected from the patients included the following: age, educational status, marital status, duration of breast cancer, breast cancer stage, number of hospitalizations in the past six months, number of comorbidities, and payment type for treatment. Caregivers' demographic data include sex, age, marital status, educational level, number of caregiving hours (per day), relationship to the patient, duration of the caregiving, employment status, and family income per month.

Perceived Burden: ZBI, a 22 item is scored on a 5-point Likert scale. Each question is scored from 0 to 4, where zero = never, one = rarely, two = sometimes, three = quite frequently, and four = nearly always. The total ZBI was secured by adding all the scores for the 22 questions with a range of 0 to 88, higher scores suggesting higher burden [15]. The Cronbach's alpha was 0.99 in this study.

Social Support: SSRS, a 10-item scale with three subscales (subjective support, objective support, and utilization of social support) was used, and higher scores indicate better support. The SSRS has adequate reliability and validity. The test-retest reliability coefficient was 0.92, and internal consistency of the scale was 0.89 [16]. The Cronbach's alpha coefficient was 0.90 in this study.

Self-Efficacy: 10-item GSE was used. The GSE consists of a four-point scale, with a range from zero, indicating "completely wrong", to four, indicating "totally right." Higher scores indicate better self-efficacy. The GSE has adequate reliability and validity [17]. The Cronbach's alpha coefficient and test-retest reliability coefficient have been reported as 0.91 and 0.80, respectively, for chronic disease caregivers in China [18]. In this study, the Cronbach's alpha coefficient was 0.86.

Data Collection

The informal caregivers who brought cancer patients to the oncology unit of the teaching hospital were interviewed. The purpose and process of the research were explained to them, they were asked to sign a written informed consent form. The

instruments were explained to the participants, who then read through question items and ticked their answers on the space provided. The questionnaires took about 30 minutes to complete.

Ethical Considerations

Ethical approval was obtained from the Institutional Review Boards (ABUTH/EC/124/2017). Written consent was obtained from the participants and information was kept confidential. All participants were treated equally and impartially.

Data Analysis

Data were analysed using the SPSS version 22. Descriptive statistics were used to describe demographic characteristics and study variables. The independent samples t-test and analysis of variance were used to detect caregiver burden differences in subgroups of patients' and caregivers' characteristics. Multivariate linear regression analysis was used to identify the factors contributing to the caregiver burden. The significant factors in univariate and correlation analyses were entered in a multivariate regression model, with the caregiver burden as the dependent variable. Significant demographic characteristics of the patients and caregivers, self-efficacy, and social support were the independent variables for analysis. All tests were two tailed, and $P < 0.05$ was considered the statistical significance level.

Results

Among the 244 potential eligible participants we contacted, five patients refused to participate due to physical reasons, nine caregivers declined due to insufficient time, and four caregivers did not provide a reason. A total of 226 participants (patient-caregiver dyads) completed the survey and were included in the analysis.

Patient's Characteristics

Among the 108 patients, the average age was 59.7 years (standard deviation [SD] = 14.9), and 96 patients (88.9%) were married. More than half of participants (55.6%) had less than secondary school education. The majority (86.1%) pay for the medical bills. The cancer stage distribution among patients ranged from stage II to stage IV; there were 12 stage II patients (11.1%), 77 stage III patients (71.3%), and 19 stage IV patients (17.6%). The overall mean score on the cancer stage was 3.21 (SD= 0.57). More than half (52.8%) had two hospitalization experiences within the past 6 months. The majority of patients (74.1%) had at least one comorbidity (Table 1).

Caregiver's Characteristics

The average age of the informal caregivers was 41.9 years (13.8), and the age range was 18– 65 years. Most of the caregivers were female (75.4%) and married (86.4%). The majority of caregivers (87.3%) had an educational level of junior secondary school or above. The majority (89%) had a monthly family income of less than US \$500, which is a low-income level. Most of the caregivers

(83.1%) had a full-time or part-time job. The majority of caregivers (77.1%) were adult children of the patients, and (14.4%) were the spouses/partners. Most caregivers (78%) spent more than 4 hours per day providing care for the patients, and 55% had cared for the patients for more than one year. The majority of caregivers (72.9%) lived with the patients (Table 1).

Table 1: Socio-demographic distribution of patients and their informal caregivers.

Socio-Demographic Distribution of Patients and their Informal Caregivers		
Variable	Patients (n=108), n (%)	Informal caregivers (n = 118), n (%)
Gender		
Male		29 (24.6)
Female	108 (100)	89 (75.4)
Age of patient (year)		
≤ 50	13 (12.0)	
51-60	69 (63.9)	
≥61	26 (24.1)	
Age of caregiver (year)		
≤ 40		37 (31.4)
41-49		58 (49.1)
≥50		23 (19.5)
Formal education		
Primary school	54 (50.0)	35 (29.7)
Junior secondary school	6 (5.6)	18 (15.2)
Senior secondary school	10 (9.3)	15 (12.7)
Higher institution	38 (35.1)	50 (42.4)
Marital status		
Married	96 (88.9)	102 (86.4)
Single/divorced	12 (11.1)	16 (13.6)
Employment status		
Employed		98 (83.1)
Unemployed		20 (16.9)
Duration of illness (year)		
<1	17 (15.7)	
≥1	91 (84.3)	
No. hospitalizations in past 6months		
1	28 (25.9)	
2	57 (52.8)	
≥3	23 (21.3)	
Monthly family income (US\$)		
≤200		57 (48.3)
201-349		34 (28.8)
350-499		14 (11.9)
≥500		13 (11.0)
Breast cancer stages		
0	0 (0)	
1	12 (11.1)	
2	77 (71.3)	
3	19 (17.6)	
No. comorbidities of patients		
0	28 (25.9)	
1	64 (59.2)	

2	10 (9.3)	
≥3	6 (5.6)	
Payment type for treatment		
Health insurance	15 (13.9)	
Self-support	93 (86.1)	
Relationship to patient		
Spouse/partner		17 (14.4)
Children		91 (77.1)
Other relatives		10 (8.5)
Duration of caregiving (year)		
<1		53 (45.0)
≥1		65 (55.0)
Caregiving hour/day		
0-4		26 (22.0)
5-8		57 (48.3)
9-12		15 (12.7)
≥13		20 (17.0)
Co-residency with the patient		
Yes		86 (72.9)
No		32 (27.1)

Caregiver Burden Among Informal Caregivers

The mean ZBI score was 37.1 (12.3). 13.3% had “low” care burden and 86.7% had “high” care burden (Table 2).

Table 2: Caregiver burden among informal caregivers.

Caregiver Burden Among Informal Caregivers	
Items	Frequency (%)
Low burden (≤24)	30 (13.3)
High burden (>24)	196 (86.7)
Total score of caregiver burden, mean (SD)	37.05 (12.3)

Relationship between the Caregiver Burden, Social Support and Self-Efficacy

The Pearson correlation analysis showed that the caregiver burden was inversely associated with social support (r= -0.527, p<0.01) and self-efficacy (r= -0.509, p<0.01) (Tables 2 & 3).

Table 3: Relationship between caregiver burden, social support, and self-efficacy.

Relationship between Caregiver Burden, Social Support, and Self-Efficacy		
Variables	Caregiver burden	p-value
Social support	-0.527	0.000**
Self-efficacy	-0.509	0.000**

*P<0.05, **P<0.01.

Factors Related to Caregiver Burden

The univariate factor analysis showed that there were significant relationships between the caregiver burden and

patient characteristics, including educational status, number of hospitalizations in the past six months, breast cancer staging, duration of illness, number of comorbidities, and payment type for treatment. In addition, patients with a lower education level, more hospitalization experiences, a higher breast cancer staging, longer duration of illness, more comorbidities, and self-support for treatment demonstrated a higher caregiver burden (Table 4). The univariate factor analysis revealed that there were significant relationships between the caregiver burden and characteristics of caregivers (educational level, marital status, monthly family income, employment status, relationship to the patient, duration of caregiving, and number of caregiving hours per day). In addition, caregivers with a lower educational level, lower monthly income, longer duration of caregiving, more caregiving hours per day, as well as adult-child caregivers also suffered higher level of caregiver burden (Table 4). Multivariate analysis was used to detect factors associated with the caregiver burden, using the caregiver burden as the dependent variable and significant variables from the univariate and correlation analysis as independent variables. The multivariate analysis showed that the payment type for treatment (b = -0.431, p<0.01), monthly family income (b = -0.133, p<0.01), relationship to the patient (b = 0.404, p<0.01), self-efficacy (b= -0.314, p<0.01), and social support (b = -0.137, p<0.01) were significantly related to the caregiver burden. 44% of the variance in the caregiver burden was explained by the identified significant factors (Table 5). The statistical power of this study was 82.7%, which was adequate to explain the caregiver burden (Tables 4 & 5).

Table 4: Factors related to caregiver burden among the characteristics of patients and caregivers in the univariate analysis.

Factors Related to Caregiver Burden Among the Characteristics of Patients and Caregivers in the Univariate Analysis				
Characteristic of patients	Subgroup	Caregiver burden Mean (SD)	t/F	p-value
Gender	Female	38.27 (13.79)	1.333	0.250
	Male			
Age (year)	≤ 50	32.36 (6.86)	3.321	0.117
	51-60	33.48 (9.46)		
	≥61	36.19 (14.36)		
Formal education	Primary school	29.42 (10.51)	16.212	0.000**
	Junior secondary	27.42 (3.43)		
	Secondary school	42.20 (12.97)		
	Higher institution	33.22 (8.93)		
Marital status	Married	36.79 (10.98)	2.121	0.163
	Single/divorced/widowed	42.67 (19.43)		
No. hospitalization	1	24.46 (4.08)	59.420	0.000**
	2	35.23 (8.78)		
	≥3	42.54 (12.32)		
Breast cancer staging	II	21.50 (0.51)	22.922	0.000**
	III	36.83 (9.15)		
	IV	41.77 (15.93)		
Duration of illness	<1	25.31 (6.54)	15.519	0.000**
	≥1	30.38 (7.00)		
No. comorbidities	0	25.77 (9.00)	13.107	0.000**
	1	30.33 (6.70)		
	2	36.17 (6.27)		
	≥3	42.34 (15.32)		
Payment type for treatment	Health insurance	29.95 (6.51)	84.180	0.000**
	Self-support	54.20 (9.66)		
Characteristic of caregivers				
Sex	Male	37.78 (15.30)	0.568	0.452
	Female	36.52 (9.63)		
Age (years)	≤ 40	39.86 (11.26)	6.497	0.078
	41-49	37.38 (6.02)		
	≥50	36.82 (14.25)		
Formal education	Primary school	41.41 (14.20)	3.784	0.005**
	Junior secondary	36.92 (11.41)		
	Secondary school	34.24 (6.22)		
	Higher institution	33.80 (11.69)		
Marital status	Married	36.86 (10.95)	4.674	0.010*
	Single/divorced/widowed	42.67 (19.43)		
Monthly family income (US\$)	≤200	38.41 (13.69)	8.667	0.000**
	201-349	43.00 (13.75)		
	350-499	43.84 (10.10)		
	≥500	37.15 (11.34)		
Employment status	Employed	39.31 (14.74)	3.911	0.029*
	Unemployed	32.13 (9.91)		
Relationship to patient	Children/other relatives	40.17 (12.63)	8.404	0.000**
	Spouse/partner	29.14 (6.91)		
Duration of caregiving (years)	<1	30.70 (7.02)	8.301	0.006**

	≥1	35.25 (10.80)		
Co-residency with the patient	Yes	36.72 (12.94)	0.233	0.630
	No	37.53 (11.68)		
Caregiving hours/day	0–4	28.50 (7.33)	8.743	0.000**
	5–8	37.08 (5.08)		
	9–12	38.06 (5.08)		
	≥13	40.92 (16.21)		

*P<0.05, **P<0.01. Statistic from a t-test analysis, F statistic from an analysis of variance.

Table 5: Factors related to caregiver burden in the multivariate analysis (n = 226).

Factors Related to Caregiver Burden in the Multivariate Analysis (N = 226)					
Variables	B	SE	B	t	p-value
Payment type for treatment	-4.983	0.484	-0.431	-10.293	0.000**
Monthly family income	-1.551	0.521	-0.133	-2.920	0.000**
Relationship to patient	10.972	1.137	0.404	9.636	0.000**
Self-efficacy of caregivers	-6.246	0.724	-0.314	-8.531	0.000**
Social support	-2.254	0.082	-0.137	2.182	0.000**

**P<0.01. Standardized coefficient. Adjusted R² = 0.43.7, P<0.01.

Discussion

This study revealed that the majority of informal caregivers (86.7%) had a high level of caregiver burden. The score of caregiver burden in this study was higher than the results of other studies on cancer caregivers. The factors associated with caregiver burden were payment type for treatment, monthly family income, relationship to the patient, social support, and caregiver’s self-efficacy. In this study, most caregivers were in their early 40s, and the majority of caregivers were children of women with breast cancer. Our finding supports similar prior study, which reported that most family caregivers were sons and daughters of the patients with average age of 42 [19]. The results could be related to the cultural norms of Nigeria. The cultural teachings uphold the family first and dictate that children will take care of their aged parents [20]. It is considered a basic moral obligation, rather than a virtue, for adult children to take care of their ill and aged parents in this context [21]. The adult children might be considered as an unfilial piety and despised by the public if they do not care for their parents. As a result, most adult children live with their aged parents and take care of them, which may be different from the culture of Western countries. Strategies specific to the younger caregivers should be taken to reduce their caregiver burden, as discussed later.

The caregiver burden of informal caregivers of women with breast cancer in this study was 37.1 + 12.3, which is lower than that reported among caregivers of dementia patients [22], indicating that different diseases have different levels of caregiver burden. However, the burden reported in this study was higher than the figures reported among caregivers of cancer patients in Southern Nigeria [23]. The different level of local socio-economy might account for the results, because this study was conducted in Northern Nigeria, a less developed area in socio-economic with

fewer medical resources compared to southern area. The majority of caregivers (83.7%) in this study had a monthly family income of less than US \$500. As a result, the heavy financial burden might increase the caregiver burden. Proposed strategies to relieve the caregiver burdens in low-income countries include adding government financial support, expanding the coverage of health insurance, and providing more resources. We found that caregivers who were adult children expressed the highest level of burden among all informal caregivers. Findings from prior studies in this area were inconsistent [9,24,25]. Some studies were in agreement with our results [9,25], but others reported that spousal caregivers suffered the most [24].

Adult children are more likely to suffer a higher caregiver burden due to conflicts between their caregiving tasks, careers, and nuclear families [25]. In this study, most caregivers were adult children who were employed. Employment outside the home was associated with an additional burden because of conflicts between working and caregiving tasks [26]. In contrast, most of the spouses of the cancer patients had retired, according to the Nigerian retirement age (60 year of age, or 35 year in service), and they had more spare time and energy to take care of the patients, which might decrease the burden. Moreover, the one-child belief and traditional care for their sick and aging parents. As a result, most adult children live with and take care of their parents and parents in-law. In these circumstances, adult children have an additional burden with the obligation of taking care of four elderly parents, particularly those with a low family income. This finding provides an incentive for the Nigerian Government and medical staff to pay more attention and provide additional support for adult-child caregivers. Taking into consideration the younger age of most caregivers, it is important to establish day care respite services.

Technological resources adapted to the caregiver's schedule are useful for these younger caregivers, including a telephone-based follow up, online caregiver guidance, and Internet support groups. Consistent with the results of other studies, social support had an inverse relationship with caregiver burden [27,28]. Caregivers with more social support from their families and professional institutes might have more time or energy to care for themselves and patients, as well as handle family and social activities. Additionally, social support from families made it easier for caregivers to adapt their lifestyles to their patients' situations, minimizing caregiver burden [29]. Currently, due to insufficient medical resources in Nigeria, the major support for caregivers is from family members, and it specifically consists of emotional support. As a result, more social support from medical staff is needed to reduce the caregiver burden, such as providing professional information and support for informal caregivers in the community, strengthening home-care services, and providing support groups for caregivers. Consistent with other studies, we found that self-efficacy was associated with a reduced caregiver burden [30,31].

Caregivers with high self-efficacy tended to be able to deal more readily with caregiving stress and tasks. Therefore, strategies to improve self-efficacy, such as additional training, follow up, peer education, and support groups for caregivers might decrease the caregiver burden. The longer time spent in caring for patients per day were associated with higher burden. This finding is consistent with that of a previous study [32] where disrupted schedules in daily activities were related to caregiver burden. The payment type for treatments and monthly family income were also associated with the caregiver burden. Caregivers who took care of patients with health insurance expressed a lower caregiver burden compared to caregivers who were self-paying. These results were consistent with other studies reporting that low economic status was linked to an increased caregiver burden [26,33]. As a result, more financial and policy support are necessary for caregivers with a low income and those caring for patients with self-payment.

Implications for Practice

The results of this study inform strategies and interventions that are suitable for low-income community. Assessment for breast cancer caregiver burden is needed to identify high-risk caregivers. Early interventions to increase the social support and self-efficacy for caregivers are necessary. Examples include government-sponsored health policies and services, such as enlarging the coverage of health insurance and offering respite care service. Moreover, targeted instructional support that integrates knowledge, skills, and coping strategies is essential for breast cancer caregivers to reduce their burden.

Limitations

Limitations to the study are the descriptive design and convenience sample, making it difficult to identify causal relationships. As a result, a longitudinal study is recommended. A

large, multi-site study is needed. Other potential variables, such as the coping style, family function, and health status of caregivers, should be considered in future studies.

Highlights

In this study, majority of informal caregivers of women with breast cancer had a high level of caregiver burden. The factors associated with caregiver burden were payment type for treatment, monthly family income, relationship to the patient, social support, and caregiver's self-efficacy. Social support and self-efficacy had an inverse relationship with caregiver burden. Caregivers with more social support from their families and professional institutes might have more time or energy to care for themselves and patients, as well as handle family and social activities. Caregivers with high self-efficacy tended to be able to deal more readily with caregiving stress and tasks. In a country such as Nigeria, more attention should be placed on financial burden and insufficient resources associated with the caregiver burden.

Conclusion

The financial burden and insufficient resources are factors associated with the caregiver burden among caregivers in low-income countries. More attention and support should be placed on adult-child caregivers in low-income countries. Assessments of the caregiver burden and targeted interventions, such as increasing self-efficacy and social support in low-income areas, are necessary to identify and alleviate the caregiver burden.

Acknowledgment

The authors acknowledge the support received from the management of ABUTH and the research assistants.

References

1. Rezaeian M, Sharifirad G, Mostafavi F, Moodi M, Abbasi MH (2014) The effects of breast cancer educational intervention on knowledge and health beliefs of women 40 years and older, Isfahan, Iran. *J Educ Health Promot* 3: 43.
2. Bray F, Ferlay J, Soerjomataram I, Siegel RL, Torre LA, et al. (2018) Global cancer statistics 2018: GLOBOCAN estimates of incidence and mortality worldwide for 36 cancers in 185 countries. *CA Cancer J Clin* 68(6): 394-424.
3. Adeloye D, Sowunmi OY, Jacobs W, David RA, Adeosun AA, et al. (2018) Estimating the incidence of breast cancer in Africa: a systematic review and meta-analysis. *J Glob Health* 8(1): 010419.
4. Ghoncheh M, Pournamdar Z, Salehiniya H (2016) Incidence and mortality and epidemiology of breast cancer in the world. *Asian Pac J Cancer Prev* 17(S3): 43-46.
5. You W, Henneberg M (2018) Cancer incidence increasing globally: the role of relaxed natural selection. *Evol Appl* 11(2): 140-152.
6. Asobayire A, Barley R, (2015) Women's cultural perceptions and attitudes towards breast cancer: Northern Ghana. *Health Promot Int* 30(3): 647-657.
7. Azubuikwe SO, Muirhead C, Hayes L, McNally R (2018) Rising global burden of breast cancer: the case of sub-Saharan Africa (with emphasis on Nigeria) and implications for regional development: a review. *World J Surg Oncol* 16: 63.

8. Mitnick S, Leffler C, Hood VL (2010) Family caregivers, patients and physicians: ethical guidance to optimize relationships. *J Gen Intern Med* 25(3): 255-260.
9. Lkhoyaali S, El Haj MA, El Omrani F, Layachi M, Ismaili N, et al. (2015) The burden among family caregivers of elderly cancer patients: prospective study in a Moroccan population. *BMC Res. Notes* 8: 347.
10. Dionne-Odom JN, Hull JG, Martin MY, Lyons KD, Prescott AT, et al. (2016) Associations between advanced cancer patients' survival and family caregiver presence and burden. *Cancer Med* 5(5): 853-862.
11. Effendy C, Vernooij-Dassen M, Setiyarini S, Kristanti MS, Tejawinata S, et al. (2015) Family caregivers' involvement in caring for a hospitalized patient with cancer and their quality of life in a country with strong family bonds. *Psycho-Oncology* 24(5): 585-591.
12. Kent EE, Rowland JH, Northouse L, Litzelman K, Chou WY, et al. (2016) Caring for caregivers and patients: research and clinical priorities for informal cancer caregiving. *Cancer* 122(13): 1987-1995.
13. Folkman S (1997) Positive psychological states and coping with severe stress. *Soc. Sci. Med.* 45(8): 1207-1221.
14. Shaw C (1999) A framework for the study of coping, illness behaviour and outcomes. *J Adv Nurs* 29(5): 1246-1255.
15. Bahrami M, Farzi S (2014) The effect of a supportive educational program based on COPE model on caring burden and quality of life in family caregivers of women with breast cancer. *Iran J Nurs Midwifery Res* 19(2): 119-126.
16. Gu Y, Hu J, Hu Y, Wang J (2016) Social supports and mental health: a cross-sectional study on the correlation of self-consistency and congruence in China. *BMC Health Serv Res* 16: 207.
17. Yildirim F, İlhan İÖ (2010) The validity and reliability of the general self-efficacy scale-Turkish form. *Turk Psikiyat Derg* 21(4): 301-308.
18. Zhou DM, Qian XL, Lu MM, Jia SM, Sun XC (2011) Investigation on the caring behaviors and its influencing factors among family caregivers of patients with pressure ulcer. *Chinese J Nurs* 4: 25.
19. Turkoglu N, Kılıç D (2012) Effects of Care Burdens of Caregivers of Cancer Patients on their Quality of Life 13(8): 4141-4145.
20. Pharr JR, Dodge Francis C, Terry C, Clark MC (2014) Culture, Caregiving, and Health: Exploring the Influence of Culture on Family Caregiver Experiences. *ISRN Public Health* p. 1-8.
21. Yusuf AJ, Adamu A, Nuhu FT (2011) Caregiver burden among poor caregivers of patients with cancer in an urban African setting. *Psychooncology* 20(8): 902-905.
22. Mougias AA, Politis A, Mougias MA, Kotrotsou I, Skapinakis P, et al. (2015) The burden of caring for patients with dementia and its predictors. *Psychiatr. Psychiatr* 26(1): 28-37.
23. Akpan Idiok, PA, Anarado AN (2014) Perceptions of burden of caregiving by informal caregivers of cancer patients attending University of Calabar Teaching Hospital, Calabar, Nigeria. *Pan Afr Med J* 18: 159.
24. Çınar HG, Arkan B, Avdal EÜ, Aksu E, Vatanserver H, et al. (2016) Determining the Care Burden of Caregivers Taking Care of Patients with Cancer. *Cancer* 3: 1049.
25. Given B, Wyatt G, Given C, Gift A, Sherwood P, et al. (2004) Burden and depression among caregivers of patients with cancer at the end-of-life, in: *Oncology Nursing Forum* 31(6): 1105-1117.
26. Hsu T, Loscalzo M, Ramani R, Forman S, Popplewell L, et al. (2014) Factors associated with high burden in caregivers of older adults with cancer. *Cancer* 120(8): 2927-2935.
27. Maheshwari Preksha S, Kaur MR (2016) Perceived Social Support and Burden among Family Caregivers of Cancer Patients. *Int J Heal Sci Res* 6(1): 304-314.
28. Nightingale CL, Curbow BA, Wingard JR, Pereira DB, Carnaby GD (2016) Burden, quality of life, and social support in caregivers of patients undergoing radiotherapy for head and neck cancer: A pilot study. *Chronic Illn* 12(3): 236-245.
29. Dayapoğlu N, Tan M (2017) The care burden and social support levels of caregivers of patients with multiple sclerosis. *Kontakt* 19(1): 17-23.
30. Havyer RD, van Ryn M, Wilson P, Griffin JM (2015) Effect of training on the self-efficacy of informal caregivers of colorectal cancer patients. *Journal of Clinical Oncology*.
31. Yildiz E, Karakaş SA, Güngörmüş Z, Cengiz M (2017) Levels of care burden and self-efficacy for informal caregiver of patients with cancer. *Holist Nurs Pract* 31(1): 7-15.
32. Yoon SJ, Kim JS, Jung JG, Kim SS, Kim S (2014) Modifiable factors associated with caregiver burden among family caregivers of terminally ill Korean cancer patients. *Support Care Cancer* 22(5): 1243-1250.
33. Yakubu YA (2018) Caregiver attributes and socio-demographic determinants of caregiving burden in selected low-income communities in cape town, South Africa. *J Compassionate Heal. Care* 5: 3.

ISSN: 2574-1241

DOI: 10.26717/BJSTR.2019.15.002704

Israel Olatunji Gabriel. Biomed J Sci & Tech Res



This work is licensed under Creative Commons Attribution 4.0 License

Submission Link: <https://biomedres.us/submit-manuscript.php>**Assets of Publishing with us**

- Global archiving of articles
- Immediate, unrestricted online access
- Rigorous Peer Review Process
- Authors Retain Copyrights
- Unique DOI for all articles

<https://biomedres.us/>