

The Effects of Nano-honey Containing Hydroxyapatite on Socket Healing



Naghmeh Bahrami^{1,2}, Hassan Shahabinejad³, Abdolreza Mohamadnia⁴, Sadegh Shirian^{5,6}, Hasti Seifi⁷, Masoum Abniki⁸, Mohamad Bayat^{*1,2}

¹Craniomaxillofacial Research Center, Tehran University of Medical Sciences, Tehran, Iran

²Oral and Maxillofacial Surgery Department, School of Dentistry, Tehran University of Medical Sciences, Tehran, Iran

³Department of Endodontics, Henry M Goldman School of Dental Medicine, Boston University, Boston, MA, USA



⁴Chronic Respiratory Diseases Research Center, National Research Institute of Tuberculosis and Lung Diseases (NRITLD), Shahid Beheshti University of Medical Sciences, Tehran, Iran; Department of Biotechnology, School of Advanced Technologies in Medicine, Shahid Beheshti University of Medical Sciences, Tehran, Iran

⁵Department of Pathology, School of Veterinary Medicine, Shahrekord University, Shahrekord, Iran

⁶Shiraz Molecular Research Center, DrDaneshbod Pathology Lab, Shiraz, Iran

⁷School of Dentistry, Tehran University of Medical Sciences, Tehran, Iran

⁸Department of Biotechnology, Faculty of Sciences, Islamic Azad University, Tehran, Iran

Received:  December 18, 2018; **Published:**  January 02, 2019

***Corresponding author:** Mohamad Bayat, Craniomaxillofacial Research center, Tehran University of Medical Sciences, Tehran, Iran

Abstract

Background/Purpose: The aim of this study was to evaluate the effect of nano-honey containing calcium compounds on restoration of tooth socket.

Material and Methods: Based on the placed substance on tooth socket, the samples were divided into two treated groups including nano-honey, nano-honey with calcium compounds and control group in which receiving no substance. Eight weeks of post-treatment, biopsy was performed and the type of epithelium, the type of connective tissue, the degree of inflammation, and the type of the bone in the alveolar crust were histologically compared between all groups.

Results: Histological examination of 9 lamella of tooth sockets has revealed that there was no relationship in soft and hard tissue restoration between both treated group compared to the control group. The epithelial tissue in nano-honey contains calcium compounds group consisted of 33.3% normal epithelium and 66.7% squamous epithelium. The results have shown that both the nano-honey and control groups consisted of 33.3% fibrous and 66.7% granulation tissues. It has been observed that in nano-honey containing calcium compounds group, the inflammation rate was less than 10 in 66.7% of the cases and it was between 10-30 in 33.3% of the cases. Examining the bone type in the alveolar crust has illustrated that it was seen that there was no normal bone and resorption in nano-honey containing calcium compounds group. In case of nano-honey and control groups, 33.3% normal bone and 66.7% resorption were observed.

Conclusion: The findings of the present study have revealed that applying calcium compounds along with nano-honey leads to a better therapeutic effect

Keywords: Oral Squamous Cell Carcinoma; Delay; Survival Rate

Introduction

Tooth loss is an age-related complication. It is quite pervasive due to extensive caries, gum sickness, injuries and fractures [1]. Tooth removal is an operation bringing about an injury in both the delicate and hard tissues [2]. By removing a tooth, the encompassing alveolar bones experience a progression of ruinous

and inflammatory processes [3]; hence its normal recovery is related with critical loss of vertical and horizontal dorsal alveolar bone [4,5]. The lost tooth is replaced in order to restore the proper functioning. Several approaches are currently applied to replace the missing tooth, such as inserting an implant which requires

presence of sufficient amount of bone in the desired location [6]. Thus, restoration of tooth socket is necessary to maintain alveolar ridge height and width. Several solutions have been suggested to reduce and minimize osteoporosis and accelerate restoration process of post-tooth removal, including the use of synthetic bone marrow material, autologous connective tissue, a plasma rich in growth factors (PRGF) at the tooth extraction site as well as various drugs and substances [7].

The best approach to maintain and accelerate tooth socket restoration. is application of bone grafting. Nevertheless, due to the difficulties and limitations of this method, more easier and expanded methods are being investigated. Commonly used medicines have various complications and are harmful to humans. Recently, there has been a growing interest in medicines and natural products leading to their use in many areas of dentistry [8]. Application of artificial biomaterials, such as hydroxyapatite, in the restoration of lesions of hard tissue of the bone is one of the main interests of researchers. Hydroxyapatite is widely used due to its high biocompatibility and osteoconductivity properties. Various studies have shown the significant effect of this material on accelerating the repair and increasing bone volume [9,10]. On the other hand, honey is a substance that has been used by men for the treatment of wounds. According to studies, honey has an antimicrobial activity against oral pathogens and draws moisture from the environment and therefore protect the wounds.

Honey has an inhibitory effect on 60 bacterial species, including aerobic, anaerobic, gram positive and gram negative bacteria. Moreover, due to its high viscosity, it also provides a protective barrier to prevent infection [11]. Its Immunomodulatory characteristic is associated with its wound healing property; therefore, its application in on wounds helps preventing infections and increases the repair pace [12-14]. Studies have shown that applying honey on wounds significantly prevents infections and increase the speed of repair [15]. Few studies have reported the effect of honey and hydroxyapatite on increasing the magnitude of newly formed bone trabeculate and accelerating bone tissue repair. However, to our knowledge, the effect of nano-honey containing calcium compounds on dentin socket restoration is yet to be investigated. Thus, the purpose of this study was to evaluate the effect of nano-honey containing calcium compounds on restoration of tooth socket.

Methods and Materials

This experimental study was conducted on three rabbits. Three teeth were extracted from each rabbit providing, 9 histopathologic samples. A veterinarian examined the animals prior to performing the study in order to assess their general health and surgical conditions. The rabbits were then placed under general anesthesia. Their first and second molar teeth of the right side and the first molar teeth on the left side were carefully loosened using a dental elevator and then removed by forceps. Teeth sockets were divided into three groups. In the control group (the socket of the second molar tooth on the right), no substance was placed in the socket. No calcium compounds were applied in the nano-honey group (the

socket of the first molar tooth on the right) and nano-honey with calcium compounds were used in the experimental group (the socket of the first molar tooth on the left).

Nano-honey was produced as follows: to construct the scaffolds, honey was produced by the cell-gel method as a porous polymer nano-scale biocomposite, which penetrated the porosity of calcium phosphate. The cell-gel method is a chemical approach used to synthesis various nano-structures. In this method, the molecular precursor is dissolved in water or alcohol using, heat and stirring. It is then converted to gel by hydrolysis/alkylation. The gel is then dried, which can be done by burning alcohol for alcoholic beverage. The dried gel is converted into the powder from which is then heated to obtain calcite. The cell-gel method is inexpensive and the chemical composition of the products can be properly controlled due to the low reaction temperature because of the low reaction temperature. Popularity and industrial application of the cell-gel method are than other available methods. Large volumes of high-quality nano-particles (producing particles of the same size) can currently be produced using the cell-gel method.

As its solvent honey content is of organic materials produced by cell-gel method in the porous and ferruginous state where calcium phosphate is loaded. The cytotoxicity of the scaffold was investigated by Multi Interface Test Tool (MITT). After 8 weeks of treatment, biopsy was performed and prepared for histological examination. Biopsies were treated with 10% formalin and then 10% formaldehyde and decalcified and longitudinal sections. For routine H & E staining, tissue sections were cut into 4 mm thick slices in at least 4 serial sections. The sections were evaluated using a light microscope (Olympus, Japan) with various magnifications. The examined variables which were used to evaluate for evaluation the restoration included the type of epithelium, the type of connective tissue, the degree of inflammation and the type of the bone in the alveolar crust (Tables 1-4).

Table 1: Types of epithelium in various groups.

Type of Epithelium	Normal	Squamous	Does not exist
Control group	0	66.70%	33.30%
Honey group	0	66.70%	33.30%
Honey and Calcium group	33.30%	66.70%	0

Table 2: Types of connective tissue in various groups.

Type of Connective Tissue	Fibrosis	Granulation Tissue	Does not exist
Control group	33.30%	66.70%	33.30%
Honey group	33.30%	66.70%	33.30%
Honey and Calcium group	66.70%	33.30%	0

Statistical Analysis

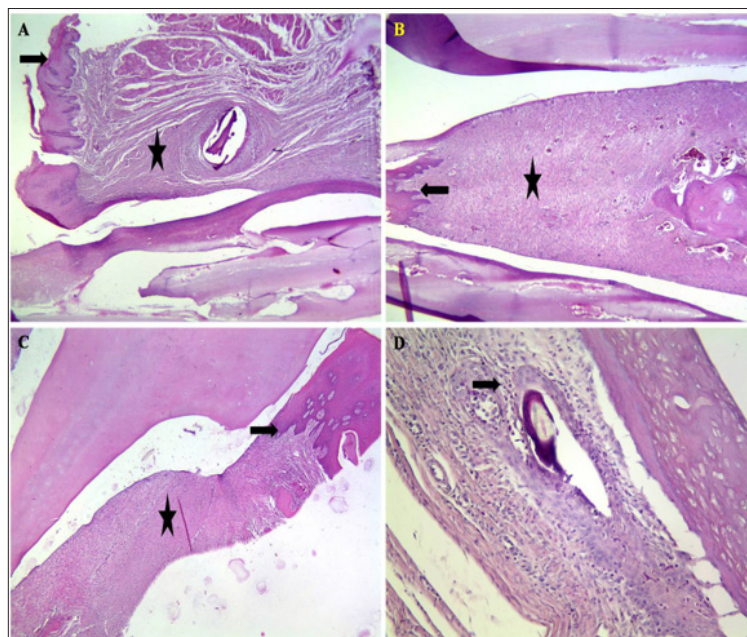
Data analyses were done using the SPSS 18.0 software package (SPSS Inc., Chicago, IL, USA). All data were expressed as means

± standard deviation (SD). One-way ANOVA was used to test differences of inflammation degree between various groups.

Results

Analysis of the data obtained from the pathologic study of 9 lamella of tooth sockets studied has revealed no relationship between the effect of nanohoney containing calcium and nano-honey alone on hard and soft tissue restoration compared to the control group. In this study, four types of epithelium, connective tissue type, inflammation rate and type of bone marrow of the alveolar crust have been investigated. More accurate interpretation of the data analysis has illustrated that epithelium in nano-honey

containing calcium compounds group consisted of 33.3% normal epithelium and 66.7% squamous epithelium (Figure 1A). However, in the group treated with nano-honey alone and the control groups, 66.7% of the cases consisted of squamous epithelium, while in 33.3% of the cases, no epithelial formation was detected (Figure 1B) and (Table 1). In addition, examination of the type of connective tissue has revealed that both the nano-honey alone and control groups consisted of 33.3% fibrous tissue and 66.7% granulation tissue (Figure 1B), whereas nano-honey contains calcium compounds group consisted of 66.7% fibrous tissue and 33.3% granulation tissue (Figure 1C) and (Table 2).



- Epithelium of nano-honey containing calcium compounds group consisted of 33.3% normal epithelium (arrow).
- In the group treated with nano-honey alone and the control groups, partial epithelial formation was detected. B: Examination of the type of connective tissue has revealed that both the nano-honey alone and control groups consisted of 33.3% fibrous tissue and 66.7% granulation tissue (Star),
- Whereas nano-honey contains calcium compounds group consisted of 66.7% fibrous tissue and 33.3% granulation tissue (Star).
- Measuring the level of inflammation has shown that in nano-honey containing calcium compounds group, the inflammation rate in 66.7% of the cases was less than 10 (arrow). Hematoxylin and eosin staining.

Figure 1: Histopathological evaluation of socket healing in various groups.

Measuring the level of inflammation has shown that in nano-honey containing calcium compounds group, the inflammation rate in 66.7% of the cases was less than 10 and in 33.3% of the cases was between 10-30 (Figure 1D). Nevertheless, in nano-honey and control groups, unlike the nano-honey contained calcium

compounds group (Table 3). Studying the type of bone in the alveolar crust has illustrated that there was no normal bone and resorption in nano-honey containing calcium compounds group. However, in both the nano-honey and control groups, 33.3% normal bone and 66.7% resorption were detected (Table 4).

Table 3: Degree of inflammation in various groups.

Inflammation rate	<10	30-Oct	>10
Control group	33.30%	66.70%	0
Honey group	33.30%	66.70%	0
Honey and Calcium group	66.70%	33.30%	0

Table 4: Types of bone in alveolar crust in various groups.

Type of Bone in the Alveolar Crust	Normal	Resorbition	Does not exist
Control group	33.30%	66.70%	0
Honey group	33.30%	66.70%	0
Honey and Calcium group	33.30%	33.30%	33.30%

Discussion

The present study has investigated the effect of nano-honey containing calcium compounds (hydroxyapatite) on the restoration of tooth socket of rabbit. Many studies have examined the effect of various scaffolds on tooth socket restoration, however no study has been performed to investigate the effect of simultaneous treatment with nanohoney and hydroxyapatite on hard and soft tissues restoration. Since therapeutic measures are complex and costly, the present study was designed to improve therapeutic measures which are needed to maintain and rebuild the alveolar bone of tooth socket. Thus, the present study is applied and innovative. The combination of honey and hydroxyapatite has been considered as an effective treatment in this study. Multiple healing properties of honey have been determined by several animal and in vitro studies.

Honey, in addition to its antibacterial properties, stimulates the formation of cranial and epithelial tissues as well as angiogenesis. It also prevents wound drying by providing a damp environment [16-18]. Moreover, the phenol substance of honey are responsible for its antioxidant effects. Phenolate substances reduce the amount of compounds, including reactive oxygen species, produced in the wounds, inflammation following the function of neutrophils and macrophages as well as the damage to the surrounding tissues [19]. Hydroxyapatite is widely used as a bone replacement component due to its bone-like composition [20]. Hydroxyapatite stimulates the process of differentiating mesenchymal stem cells into osteoblasts [21]. The findings of the present study have reported that there was no significant relationships between the effect of nanohoney containing calcium compounds on soft tissue repair and dental hardness (p value = 1).

However, more accurate analysis of the data has shown low levels of inflammation and resorb of the alveolar bone in the group of nano-honey containing calcium compounds were lower compared to other groups. Moreover, Peymani et al. has reported the positive effect of sterile honey on soft and hard dental tissue repair [22]. Nevertheless, based on the findings of the present study application of nano-honey alone did not include any positive effect on hard and soft dental tissue repair. Furthermore, in a study performed by Jull et al. to study the effect of honey on the rate of repair of acute and chronic wounds, it was found that honey would reduce the time to repair of the mild to moderate partial thickness and superficial burns [23]. Since, the findings of the present study indicated that calcium compounds slightly extended the effect of nano-honey, it can be concluded that the therapeutic effects of nano-honey is enhanced when applied along with calcium compounds. This finding supports that of the previous study conducted by Machida

et al. who have examined the effect of hydroxyapatite on dentate restoration of mouse incisors.

They have found that hydroxyapatite fibers positively affect the dental hard tissue repair [24]. However, the findings of the present study are contrary to those of the study performed by Sotto Maior et al. Who have investigated the effect of hydroxyapatite on the rate of muscle femoral repair. The results of their study have indicated that hydroxyapatite had no significant effect on initial bone remodeling [25]. This contradiction could be due to difference in the studied targets affected by hydroxyapatite. Furthermore, some studies have examined the effect of adding hydroxyapatite to scaffolds such as PCL/GE, on hard tissue formation in rat [26] Ba Linh et al. have found that cell viability, proliferation and cell-surface attachment were enhanced in response to the increased amount of hydroxyapatite in the scaffold. Their results are consistent with those of the present study, confirming the role of hydroxyapatite in improvement of hard tissue repair [26]. More detailed analysis of the obtained data in the present study has indicated that nano-honey in combination with calcium compounds enhanced the formation of normal epithelium in dental socket.

However, the results of a study performed by Hemalathai et al. have indicated that application of honey alone positively affected restoration of soft tissues consistent with Turn Bull, Landry, and How Ley indexes [27]. In addition, Okeinyi et al. have reported that duration of repair of abscess wounds was reduced by the use of honey dressing [28]. Given that this study was performed on rabbits, further studies are required to investigate the effects and safety of this substance in humans as well as its clinical application. Furthermore, the addition of osteoconductive materials and stimulating bone formation to nano-honey scaffolds containing calcium compounds is recommended in order to enhance its effect on improvement of hard tissue repair.

Acknowledgment

This study was funded by the Research Center of Maxillofacial Surgery and the Tehran University of Medical Sciences. The authors would like to thank everyone who helped us in numerous ways. We are grateful to the Baqiyatallah University of Medical Sciences.

References

- Miloro M, Ghali G, Larsen P, Waite P (2004) Peterson's principles of oral and maxillofacial surgery: PMPH-USA.
- Taylor DM, Williams DR (1995) Trace element medicine and chelation therapy: Royal Society of Chemistry
- Irinakis T (2006) Practice Clinic. J Can Dent Assoc 72(10): 917-922.
- Botticelli D, Berglundh T, Lindhe J (2004) Hard tissue alterations following immediate implant placement in extraction sites. J Clin Periodontol 31(10): 820-828.
- Tan WL, Wong TL, Wong MC, Lang NP (2012) A systematic review of post-extraction alveolar hard and soft tissue dimensional changes in humans. Clin Oral Implants Res 23 Suppl 5:1-21.
- Rosenstiel L, Land M, Fujimoto (2006) Contemporary fixed prosthodontics (4th edn).
- Archer WH (1975) Oral and maxillofacial surgery: WB Saunders Company.

8. OM O (2013) Alternative Medicine: Implications on Dentistry. *Altern Integ Med* 1(1):1000e103.
9. Thomson RC, Yaszemski MJ, Powers JM, Mikos AG (1998) Hydroxyapatite fiber reinforced poly (α -hydroxy ester) foams for bone regeneration. *Biomaterials* 19(21): 1935-1943.
10. Stanishevsky A, Chowdhury S, Chinoda P, Thomas V (2008) Hydroxyapatite nanoparticle loaded collagen fiber composites: microarchitecture and nanoindentation study. *J Biomed Mater Res Part A* 86(4): 873-882.
11. Molan PC (1992) The antibacterial activity of honey: 1. The nature of the antibacterial activity. *Bee world* 73(1): 5-28.
12. Molan PC (2001) Potential of honey in the treatment of wounds and burns. *Am J Clin Dermatol* 2(1): 13-19.
13. Al Waili N, Saloom K (1999) Effects of topical honey on post-operative wound infections due to gram positive and gram negative bacteria following caesarean sections and hysterectomies. *Eur J Med Res* 4(3): 126-130.
14. Vardi A, Barzilay Z, Linder N, Cohen H, Paret G, et al. (1998) Local application of honey for treatment of neonatal postoperative wound infection. *Acta Paediatrica* 87(4): 429-432.
15. Kingsley A (2001) The use of honey in the treatment of infected wounds: case studies. *Br J Nurs* 10(22 Supp): 13-20.
16. Bergman A, Yanai J, Weiss J, Bell D, David MP (1983) Acceleration of wound healing by topical application of honey: an animal model. *Am J Surg* 145(3): 374-376.
17. Cooper R, Molan P, Harding K (1999) Antibacterial activity of honey against strains of *Staphylococcus aureus* from infected wounds. *J Royal Society Med* 92(6): 283-285.
18. Allen K, Molan P, Reid G (1991) A survey of the antibacterial activity of some New Zealand honeys. *J Pharm Pharmacol* 43(12): 817-822.
19. Van den Berg A, Van Den Worm E, Ufford V, Quarles H, Halkes S, et al. (2008) An *in vitro* examination of the antioxidant and anti-inflammatory properties of buckwheat honey. *J Wound Care* 17(4):172-174.
20. Chen Y, Miao X (2005) Thermal and chemical stability of fluorohydroxyapatite ceramics with different fluorine contents. *Biomaterials* 26(11): 1205-1210.
21. Namini MS, Bayat N, Tajerian R, Ebrahimi-Barough S, Azami M, Irani S, Jangjoo S, Shirian S, Ai J (2018) comparison study on the behavior of human endometrial stem cell-derived osteoblast cells on PLGA/HA nanocomposite scaffolds fabricated by electrospinning and freeze-drying methods. *Orthop Surg Res* 13(1):63.
22. Peymani A, Eslammanesh T ZG The Effect of Sterilized Medihoney on the Second Maxillary Molar Socket Healing in Rat. *Rafsanjan Uni Med Sci* pp. 365.
23. Jull AB, Rodgers A, Walker N (2008) Honey as a topical treatment for wounds. *Cochrane Database Syst Rev* 4.
24. Machida T, Nyan M, Kon K, Maruo K, Sato H, et al. (2010) Effect of hydroxyapatite fiber material on rat incisor socket healing. *J Oral Tissue Eng* 7(3): 153-162.
25. Sotto Maior BS, Senna PM, Aarestrup BJV, Ribeiro RA, Assis NMDSP, Cury AADB (2011) Effect of bovine hydroxyapatite on early stages of bone formation. *Revista Odonto Ciênci* 26(3): 198-292.
26. Ba Linh NT, Min YK, Lee BT (2013) Hybrid hydroxyapatite nanoparticles-loaded PCL/GE blend fibers for bone tissue engineering. *J Biomater Sci* 24(5): 520-538.
27. Hemalatha R, Hemagaran G (2015) Effectiveness of Honey and Aloe Vera on Post Extraction Healing. *IOSR J Dent Med Sci* 14(5):123-128.
28. Okeniyi JA, Olubanjo OO, Ogunlesi TA, Oyelami OA (2005) Comparison of healing of incised abscess wounds with honey and EUSOL dressing. *J Altern Complement Med* 11(3): 511-513.

ISSN: 2574-1241

DOI: [10.26717/BJSTR.2019.12.002280](https://doi.org/10.26717/BJSTR.2019.12.002280)

Mohamad Bayat. Biomed J Sci & Tech Res



This work is licensed under Creative Commons Attribution 4.0 License

Submission Link: <https://biomedres.us/submit-manuscript.php>**Assets of Publishing with us**

- Global archiving of articles
- Immediate, unrestricted online access
- Rigorous Peer Review Process
- Authors Retain Copyrights
- Unique DOI for all articles

<https://biomedres.us/>