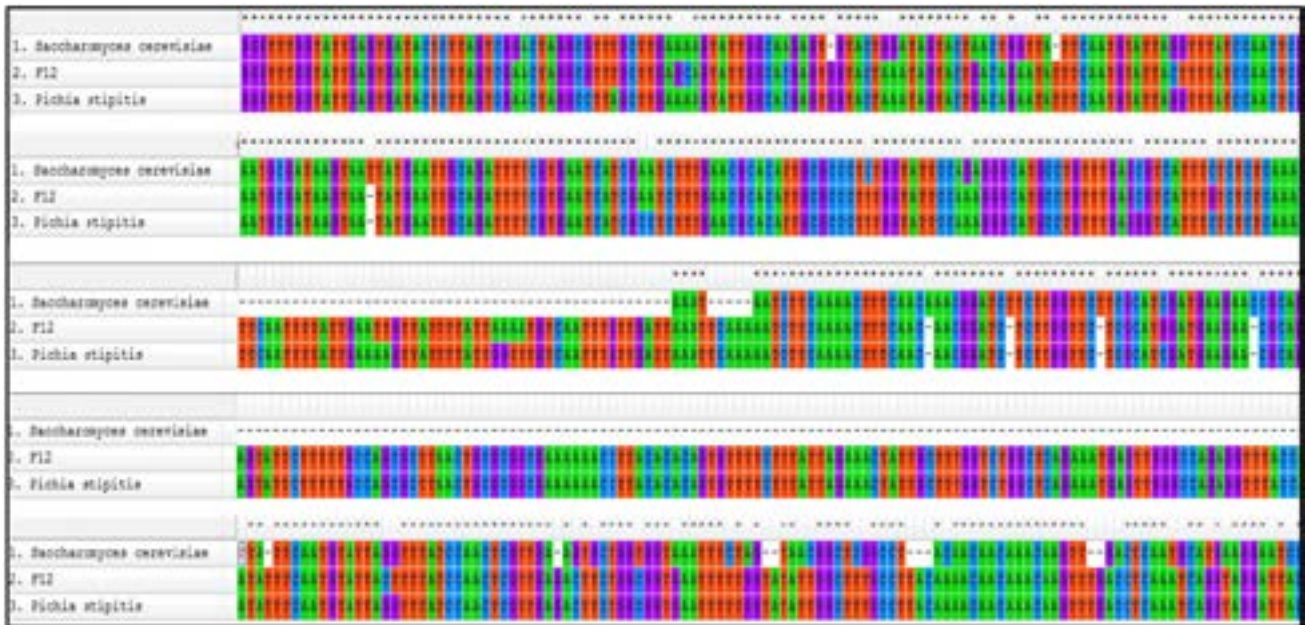
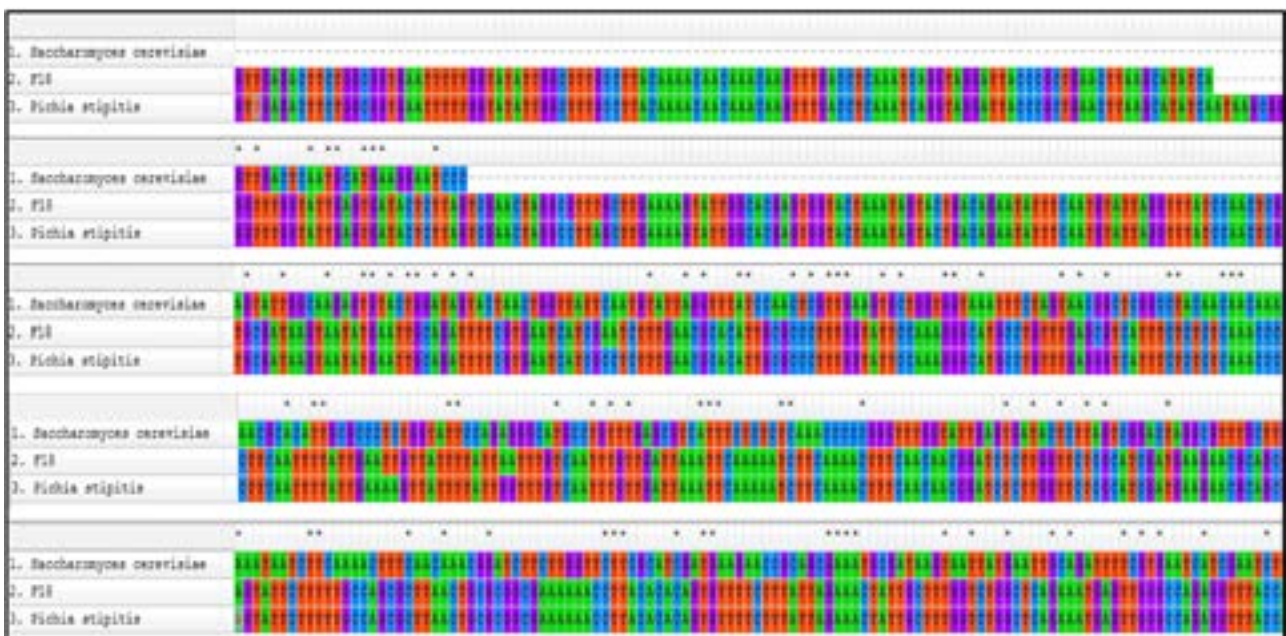


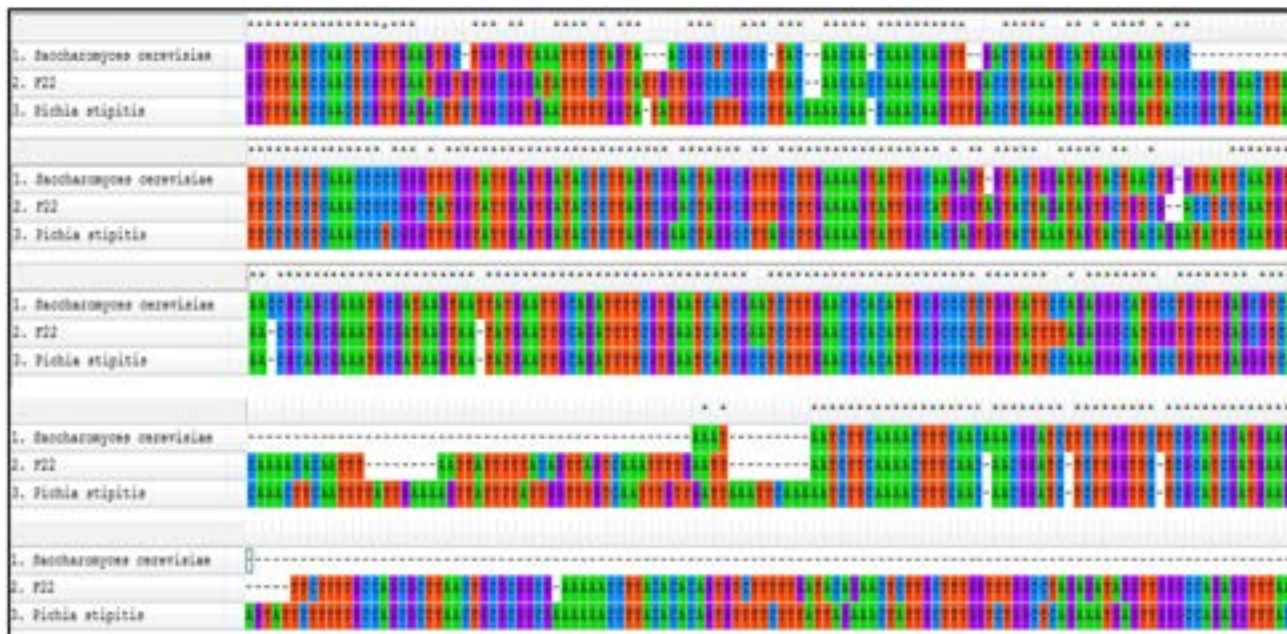
### Appendix



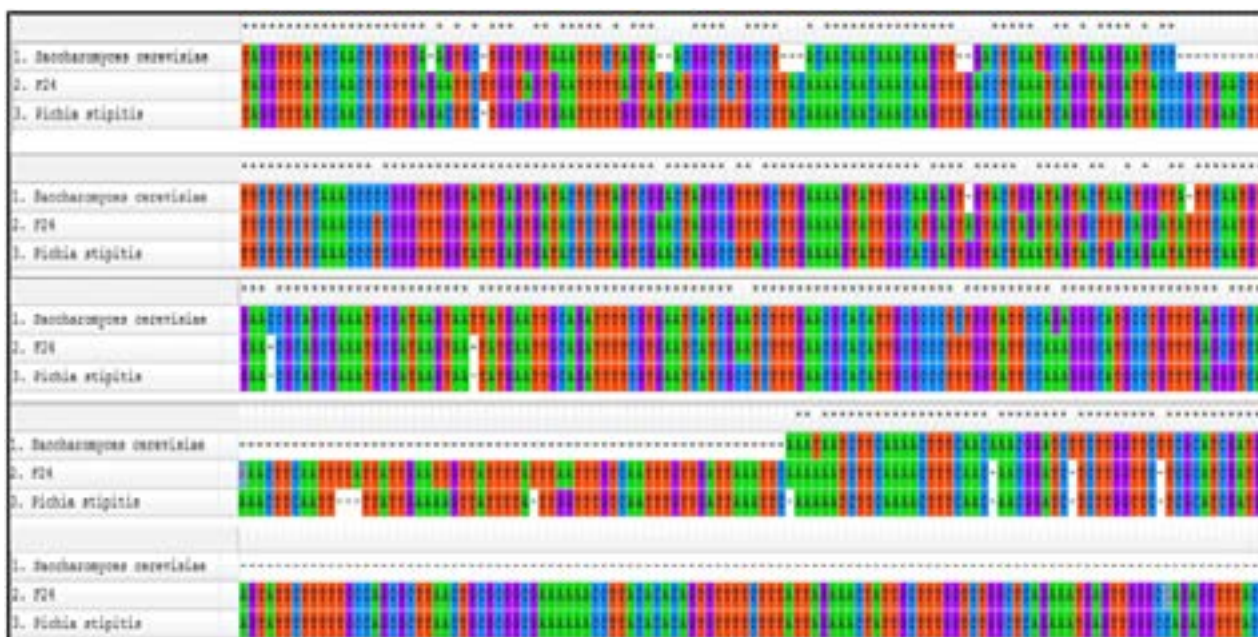
**Appendix 1:** Multiple sequence alignment of ITS1, ITS2 and 5.8s gene of parental strains (*S. cerevisiae*, *P. stipitis*) and fusant F12. The colour codes for different nucleotide base show the similarity in the sequence.



**Appendix 2:** Multiple sequence alignment of ITS1, ITS2 and 5.8s gene of parental strains (*S. cerevisiae*, *P. stipitis*) and fusant F18. The colour codes for different nucleotide base show the similarity in the sequence.



**Appendix 3:** Multiple sequence alignment of ITS1, ITS2 and 5.8s gene of parental strains (*S. cerevisiae*, *P. stipitis*) and fusant F22. The colour codes for different nucleotide base show the similarity in the sequence.



**Appendix 4:** Multiple sequence alignment of ITS1, ITS2 and 5.8s gene of parental yeast strains (*S. cerevisiae*, *P. stipitis*) and fusant F24. The colour codes for different nucleotide base show the similarity in the sequel.