

Finite Element Study: Locus of Axis of Rotation of T_{11} - T_{12} and T_{12} - L_1 Segments under Flexion/Extension and Axial Rotation Configurations

EC Teo^{1*}, TX Qiu¹, S Haiblikova², L Vignard³

¹School of Mechanical & Aerospace Engineering, Nanyang Technological University, Singapore

²Department Biomechanics and Medical Instruments, Czech Technical University in Prague, Czech Republic

³Department of Biomedical Engineering, Polytech Marseille (Aix-Marseille University), France

Received: July 06, 2017; Published: July 10, 2017

*Corresponding author: Ee Chon Teo, School of Mechanical & Aerospace Engineering, Nanyang Technological University, College of Engineering, 50 Nanyang Avenue, Singapore 639798, E-mail: mecteo@ntu.edu.sg

Abstract

In human, the thoracolumbar junction (TLJ) is a transitional region where the normal kyphotic thoracic region shifts to the normal lordotic lumbar region; the coronally oriented facet joints of the thoracic region transform to the sagittally oriented facet joints of the lumbar; and the relatively immobile thoracic region changes to the relatively mobile lumbar region. The different anatomical characteristics at the functional spinal units (FSUs) of T11- T12 and T12-L1 provide an opportunity to study the associations between pathoanatomical changes in these two levels. Hence, it is of interest to investigate the biomechanical responses of the spinal motion segments T11-T12 and T12-L1, which possess the transitional vertebra T12, to determine whether the biomechanical kinematic properties reflect these anatomical changes between these FSUs. The movement of a FSU is dependent upon several parameters, namely its complex geometry, facet articulations and material characteristics of the ligamentous tissues, intervertebral discs, and upon the applied load vectors.

Accordingly, this study aimed to use a validated FE models of thoracolumbar junctional T11- T12 and T12-L1 functional spinal units (FSUs) validated under physiological loading modes: flexion, extension, lateral bending and axial rotation, and to compare the kinematics in terms of the locations and loci of instantaneous axes of rotation (IARs).

Keywords: Thoracolumbar Junction; Finite Element; Axis of Rotation; Functional Spinal Unit

Abbreviations: TLJ: Thoraco Lumbar Junction; FSU: Functional Spinal Units; IAR: Instantaneous Axes of Rotation

Results and Discussion

The locations and loci of T12-L1 differ greatly from those of T11-T12. In sagittal plane, the locations and loci of the IARs were located below the intervertebral disc for T11-T12, situated in the intervertebral disc for T12-L1. In transverse plane, they fell in the medio-anterior region of the movable vertebra T11 for the T11-T12, and located near the cortical shell of the upper vertebra T12 for T12-L1 [1], (Figures 1 & 2).

It is known that the anatomic geometrical structure of a FSU defines its motion and related biomechanical responses. Hence, some differences in anatomical features of these two FSUs may account for the variation in loci [2]. At level T11-T12, the facet articulation is essentially oriented in the coronal plane; while in the T12-L1 segment, the facet joint surfaces are sagittally aligned. For

the intervertebral disc, at T11-T12, the anterior height is slightly larger than the posterior height; whereas, at T12-L1, the anterior height is greater than the posterior height, which results in a lordotic angle. These different orientations of the facets and the geometry of intervertebral discs demonstrate the difference in loci at the two levels, (Figures 3 & 4).

Significance

These findings offer an insight to better understanding the kinematics of the human thoracolumbar spine; provide clinically relevant information for the evaluation of spinal stability and implant device functionality, and the biomechanical load effect on spinal deformity.

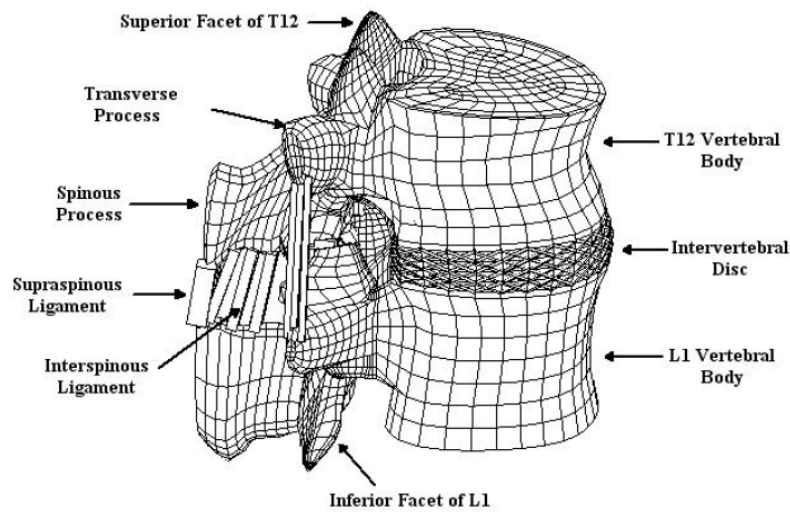


Figure 1: T12-L1 FE model.

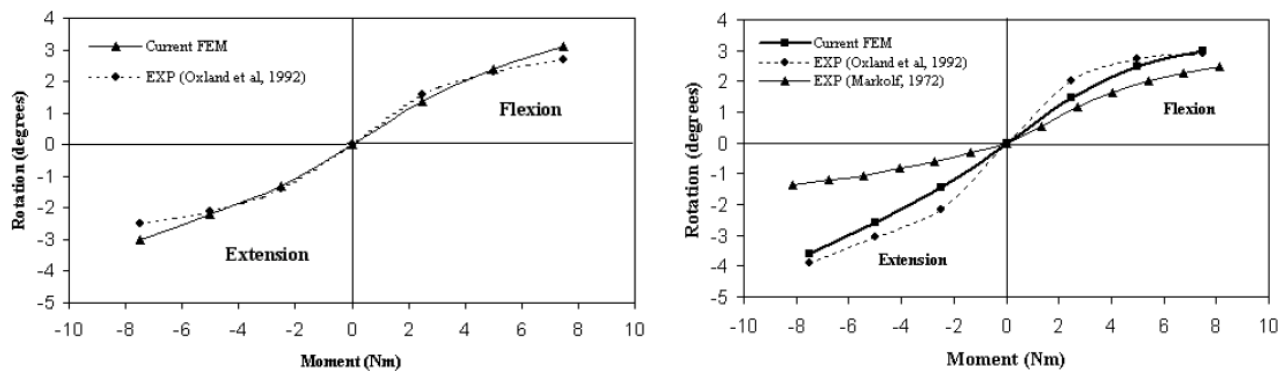


Figure 2: Angular motion of T11-T12 and T12-L1.

Figures 1 & 2: below show T12-L1 FE model and a validation study on the biomechanical responses of T11-T12 and T12-L1 under flexion/extension, respectively.

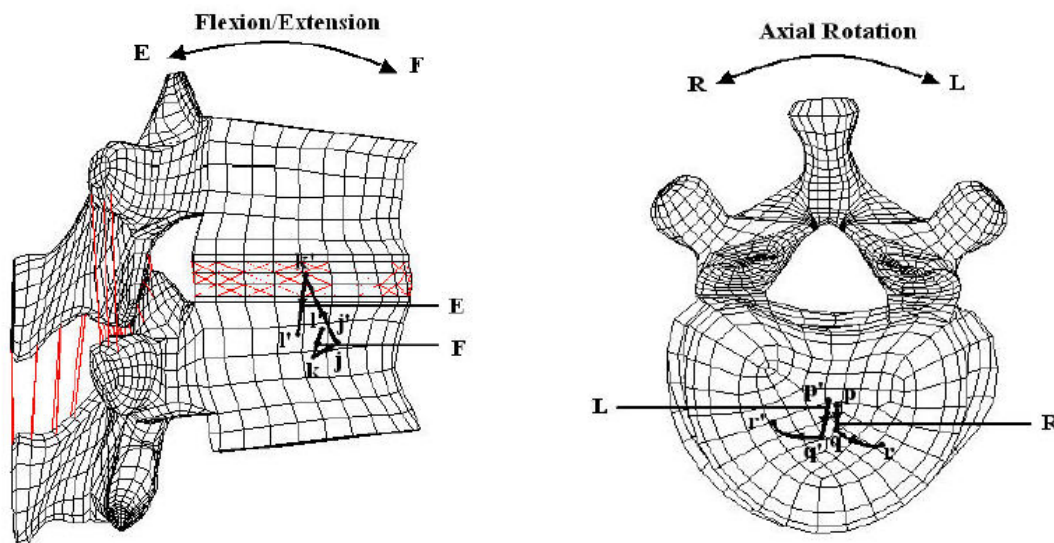


Figure 3: T11-T12 Locus of axis of rotation under F/E and A Rotation.

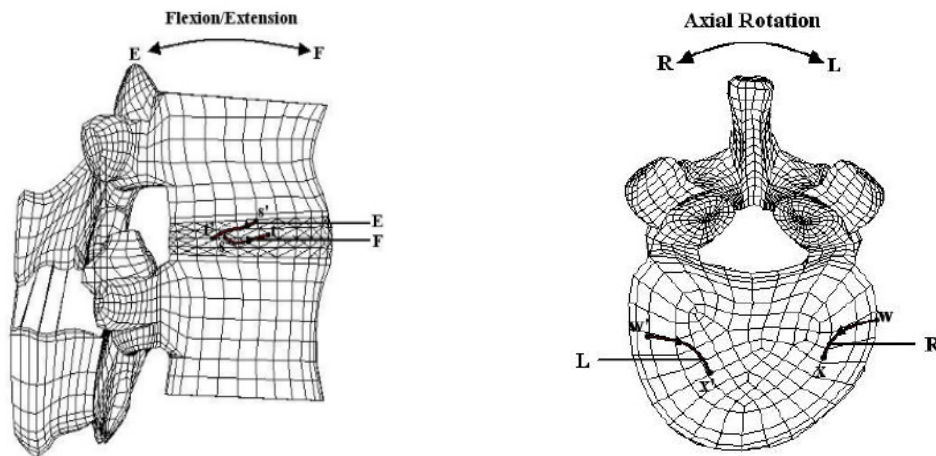


Figure 4: T12-L1 Locus of axis of rotation under F/E and A Rotation.

Figures 3 & 4: shows the locus of axis of rotation of T11-T12 and T12-L1 models under two loading configurations of flexion/extension and axial rotation, respectively.

References

1. Qiu TX, Teo EC, Zhang QH (2006) "A comparison of kinematics between thoracolumbar T11-T12 and T12-L1 functional spinal units", *IMech-E J Of Eng In Med Part H* 220(4): 493-504.
2. Oxland TR, Lin RM, Panjabi MM (1992) "Three-dimensional mechanical properties of the thoracolumbar junction". *J Orthop Res* 10(4): 573-580.



Assets of Publishing with us

- Global archiving of articles
- Immediate, unrestricted online access
- Rigorous Peer Review Process
- Authors Retain Copyrights
- Unique DOI for all articles

<http://biomedres.us/>